

# Vic Fish Stock

Vic Fish Stock meeting outcomes - 2014



© The State of Victoria Department of Environment and Primary Industries Melbourne, December 2014



This work is licensed under a Creative Commons Attribution 3.0 Australia licence. You are free to re-use the work under that licence, on the condition that you credit the State of Victoria as author. The licence does not apply to any images, photographs or branding, including the Victorian Coat of Arms, the Victorian Government logo and the Department of Environment and Primary Industries logo. To view a copy of this licence, visit <http://creativecommons.org/licenses/by/3.0/au/deed.en>

Printed by Metro Printing, Airport West. December 2014. Printed on recycled paper.

ISBN 978-1-74146-415-3 (Print)

ISBN 978-1-74146-416-0 (pdf)

For more information contact the DEPI Customer Service Centre 136 186

Front cover image: Young fisher Benny Howell with a big brown trout from Lake Fyans.

#### **Accessibility**

If you would like to receive this publication in an alternative format, please telephone the DEPI Customer Service Centre on 136186, email [customer.service@depi.vic.gov.au](mailto:customer.service@depi.vic.gov.au), or via the National Relay Service on 133 677, [www.relayservice.com.au](http://www.relayservice.com.au). This document is also available on the internet at [www.depi.vic.gov.au/fishing-and-hunting/fisheries](http://www.depi.vic.gov.au/fishing-and-hunting/fisheries)

#### **Disclaimer**

This publication may be of assistance to you but the State of Victoria and its employees do not guarantee that the publication is without flaw of any kind or is wholly appropriate for your particular purposes and therefore disclaims all liability for any error, loss or other consequence which may arise from you relying on any information in this publication.

# Contents

<b>Introduction</b>	<b>1</b>
Background	1
Fish stocking outcomes 2013-14 season — Summary	2
2014 Vic Fish Stock meeting outcomes	4
<b>Improving your fisheries state-wide</b>	<b>5</b>
RFL Commissioning Grants	5
Better recreational fishing through informed fish stocking	5
Wild trout fishing concerns	6
Murray cod regulation review	8
Recreational Fishing Initiative	9
Key outcomes 2012/13	10
Recreational Fishing Grants Program (RFGP)	14
Fishing for Grants?	14
Submitting a change to the fish stocking program	15
<b>Appendix 1 – Proposed fish stockings</b>	<b>16</b>
Gippsland	17
Grampians and Barwon South West	20
Hume	34
Loddon Mallee	43
Port Phillip	48
<b>Appendix 2 – Stocking Submission Check list</b>	<b>53</b>

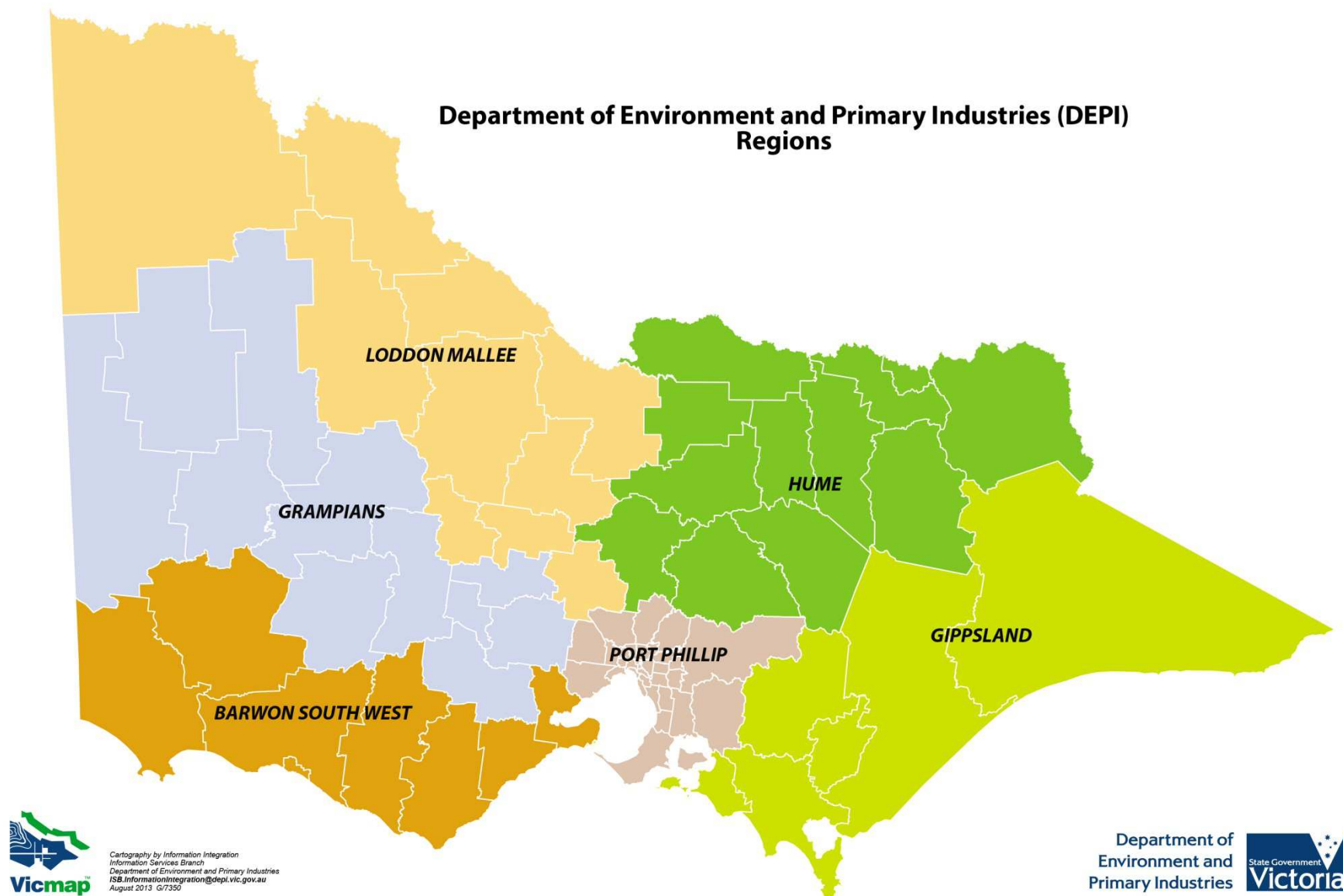


Figure1: Map of Victoria showing Department of Environment and Primary Industries regions.

# Introduction

## Background

Every year the Department of Environment and Primary Industries, through Fisheries Victoria, stock many of Victoria's inland waters with key recreational angling species to improve fishing opportunities for fishers across the state. The annual rounds of Vic Fish Stock regional consultative meetings plan the direction of these stocked fisheries. The meetings apportion the number of native fish to be stocked in the forthcoming summer (2014-15) and the number of salmonids that will be stocked in the following winter (2015). This document reports on the outcomes of the 2014 consultative meetings.

### **Vic Fish Stock meetings**

The purpose of the Vic Fish stock meetings are, for each waterbody, to consider recreational angling to:

- Determine the management objectives for the fishery
- Review the current fishery in light of the current year's stocking plan and identify any modifications required
- Draft the following year's stocking plan
- Identify other issues relevant to fish stocking
- Identify current fishery management issues
- Assess additional proposals to the stocking program

The Vic Fish Stock meetings provide a forum for discussions on fish stocking regimes and related recreational fisheries management issues. In 2014 five meetings were held across regional Victoria:

Port Phillip — held at Melbourne on the 27<sup>th</sup> August

Grampians/Barwon South West — held at Ballarat on the 28<sup>th</sup> August

Loddon Mallee — held at Bendigo on the 1<sup>st</sup> September

Hume — held at Benalla on the 3<sup>rd</sup> September

Gippsland — held at Traralgon on the 10<sup>th</sup> September

Submissions to change the stocking program are tabled from the representative angler groups. This ensures that the submissions are supported by the relevant groups. Individuals who wish to submit changes are encouraged to contact the representation groups.

The meetings involve invited representatives from a range of stakeholder groups and include Fisheries Victoria, the Victorian Recreational Fishing peak body (VRFish), the Australian Trout Foundation (ATF), Native Fish Australia (NFA), Water Management Authorities, Catchment Management Authorities (CMAs), Department of Environment and Primary Industries (DEPI) and fishing association representatives.

Draft outcomes from Vic Fish Stock meetings are prepared by Fisheries Victoria and circulated to meeting participants for comment prior to the publication of this document. This report summarises the key outcomes of the 2014 Vic Fish Stock meetings.

The Department acknowledges and values the important contribution made by stakeholders in this process, particularly those who volunteered their time to prepare for and attend these meetings.



## Fish stocking outcomes 2013-14 season — Summary

### Salmonid stocking outcomes

The 2013 Vic Fish Stock consultation proposed 620,700 salmonids to be stocked in 2014. A total of 660,699 salmonids were stocked which included the Family Fishing lakes. A breakdown of released salmonid species and numbers is presented in the following table.

Most salmonids stocked were produced at Fisheries Victoria's Snobs Creek hatchery. Some additional fish were purchased from industry.

### 2013-14 native fish stocking outcomes

The 2013-14 stocking plan for native fish was developed from the 2013 Vic Fish Stock report. It scheduled 2,020,750 native fish to be stocked in the summer of 2013-14. A total of 2,168,745 native fish were stocked. A breakdown of released native fish species and numbers is presented in the following table.

Funding from Recreational Fishing Licence (RFL) fees and the \$16 million Recreational Fishing Initiative (RFI) has helped Fisheries Victoria stock over 2 million native fish into the lakes and rivers to improve freshwater fishing opportunities for anglers.



Quality recreational fishing makes happy anglers. Lake Eildon brown trout. Photo John Douglas

	Target - Vic Fish Stock (2014)	Actual fish stocked
<b>Salmonids (2014)</b>		
Brown trout	301,600	327,877
Rainbow trout	273,100	287,122
Chinook salmon	45,000	45,700
<b>Sub total</b>	<b>620,700</b>	<b>660,699</b>
<b>Natives (2013-14)</b>		
Australian bass	82,000	82,000
Estuary perch	100,000	107,000
Golden perch	1,183,250	1,200,200
Macquarie perch	22,000	73,000
Murray cod	568,500	644,645
Catfish	20,000	1,900
Silver perch	35,000	35,000
Trout cod	10,000	25,000
<b>Sub total</b>	<b>2,020,750</b>	<b>2,168,745</b>
<b>Total</b>	<b>2,641,450</b>	<b>2,829,444</b>



Lake Toolondo has been a standout trout fishery over 2014. Photo Geoff Cramer

## 2014 Vic Fish Stock meeting outcomes

The 2014 Vic Fish Stock outcomes proposed a total of 1,585,050 native fish to be stocked into Victorian public waters in the summer of 2014-15 and 609,400 salmonids to be stocked in the winter of 2015. Details of the planned species and numbers to be stocked for each water body are detailed in Appendix 1.

The planned fish release figures summarised here and listed in Appendix 1 are targets only. Numbers may vary and may be exceeded, or not attained, depending on hatchery conditions, water conditions (e.g. water quality, water levels), infrastructure maintenance, decisions of waterway managers, security of fish supply (e.g. unforeseen impacts on production such as mortality, disease, quarantine status and availability of required stocks from private suppliers) and any unforeseen circumstances that could preclude planned fish releases. Fish allocations may, therefore, be amended prior to release.

### Summary of proposed Vic Fish Stockings 2014-15

	Proposed stocking numbers
<b>Salmonids (2015)</b>	
Brown trout	330,250
Rainbow trout	279,150
Chinook salmon	0*
<b>Sub total</b>	<b>609,400</b>
<b>Natives (2014-15)</b>	
Australian bass	123,000
Golden perch	783,450
Macquarie perch	17,000**
Murray cod	523,000
Silver perch	35,000
Trout cod	10,000**
Estuary perch	91,000
Catfish	5,000**
<b>Sub total</b>	<b>1,587,450</b>
<b>Total</b>	<b>2,196,850</b>

\* Plan for 45,000 Chinook salmon revised to continue the recovery of the broodstock population at Snobs creek Hatchery. Ongoing availability of yearlings is anticipated from 2016.

\*\*Estimates only. Numbers dependant on outcomes of breeding trials.



# Improving fisheries state-wide

An overview of selected state-wide inland fisheries management programs relating to fish stocking.

## RFL Commissioning Grants

### Better recreational fishing through informed fish stocking

Fisheries Victoria has been successful in obtaining an RFL Commissioning Grant. The monies will be used to build Victoria's angling opportunities. It was seen in a number of RFL holder surveys and through state-wide and regional consultative forums that recreational fishers recognise fish stocking as one of their highest priorities.

Many of Victoria's waterways are reliant on native fish and salmonids being stocked by Fisheries Victoria to maintain or enhance recreational fishing. For example, trout and golden perch do not breed in lakes and altered water flow regimes and other environmental factors limit natural recruitment of native fish in rivers. Therefore, fish stocking is used to build fish populations where their recruitment is limited. These improved fish populations are then able to capitalise on favourable conditions when and if they occur (e.g. flooding). Stocking has been used to rebuild threatened native fish populations such as trout cod and Macquarie perch as well as developing new fishing opportunities for additional species.

In 2014, Fisheries Victoria's stocking effort peaked at almost 3 million fish stocked into around 200 waterways. Recent RFL funded key fish stocking programs include:

1. Expansion of Gippsland Australian bass stocking (2011–2014)
2. Drought Recovery Stocking (2009-2010)
3. Chinook salmon recovery project (2010-2011)
4. Building Northern Natives (2011–2013)
5. Million Murray cod into Lake Eildon (2010–2012)
6. Creating inland estuary perch fisheries (2012–2014)
7. Catfish breeding and stocking initiative (2011–2013)

Delivery of the first five projects has significantly improved the quality of Australian bass, Murray cod, golden perch, trout and Chinook salmon recreational fisheries. The benefits of projects six (estuary perch) and seven (freshwater catfish) are expected to come through over the next few years as stocked fish grow to catchable size.

A number of these large-scale stocking projects have recently been completed (Million Murray cod, Building Northern Natives) or are soon to be completed in 2014 (estuary perch, catfish and Australian bass projects).

Fisheries Victoria with the assistance of the Recreational Fishing Grants Working Group have successfully secured RFL funding and now has the capacity to undertake a new round of stocking projects aimed at further improving recreational fishing opportunities in Victoria. There are also some funds to undertake limited surveys, increase knowledge transfer from Fisheries to recreational fishers through an on-line database of fish stocking, mark fish and continue with Macquarie perch captive breeding research.

This commissioning project will deliver extra native fish and salmonids over a three-year period across priority waters selected in consultation with recreational fishers.

### Project Actions for Year One

- Purchase of 50,000 Australian bass fingerlings
- Purchase of 50,000 estuary perch fingerlings
- Purchase of 150,000 golden perch fingerlings
- Purchase of 100,000 Murray cod fingerlings
- Purchase of 10,000 catfish

- Development of an on-line fish stocking search engine
- Fish population surveys and annual state-wide survey report
- Captive breeding and monitoring of Macquarie perch
- Implementation of a communication strategy including advertisements in fishing media, video footage
- Calcein marking of native fish

## Wild trout fishing concerns

The summer of 2013-14 was an unhappy one for many Victoria's trout stream anglers. Widespread reports of poor fishing were received from many normally productive wild trout streams.

In response, Fisheries Victoria commissioned Arthur Rylah Institute researchers to conduct population surveys of four trout rivers in North East Victoria during February 2014. These streams were selected to broadly represent those North East rivers where anglers reported poor angling catch rates. They included the King River (above and below Lake William Hovell), the Howqua River (upstream of Mansfield-Jamieson Road), the Jamieson River (upstream of Jamieson) and the Upper Goulburn River (Jamieson to Woods Point). The results suggested that trout populations in the lower reaches of these rivers were low in abundance. Trout populations at the higher elevations seem unaffected.

The results of the survey were presented to:

- Representatives of trout fishing organisations at meetings on 3 April and 20 June 2014 held at Fisheries Victoria's Snobs Creek Hatchery. This group of 12 agreed to act as a reference group to consider future research and development proposals.
- A public forum (attended by approximately 70 guests) held at Alzburg Resort, Mansfield on 10 April 2014.

Although a range of possible factors may have contributed to the trout population results observed, the most likely leading cause of low trout abundances in the lower reaches of rivers in North East Victoria are high water temperatures associated with high ambient air temperatures and low summer river flows. Australia's mean temperature has been increasing since the 1980s and there are predictions that higher temperatures will occur more frequently in the future.

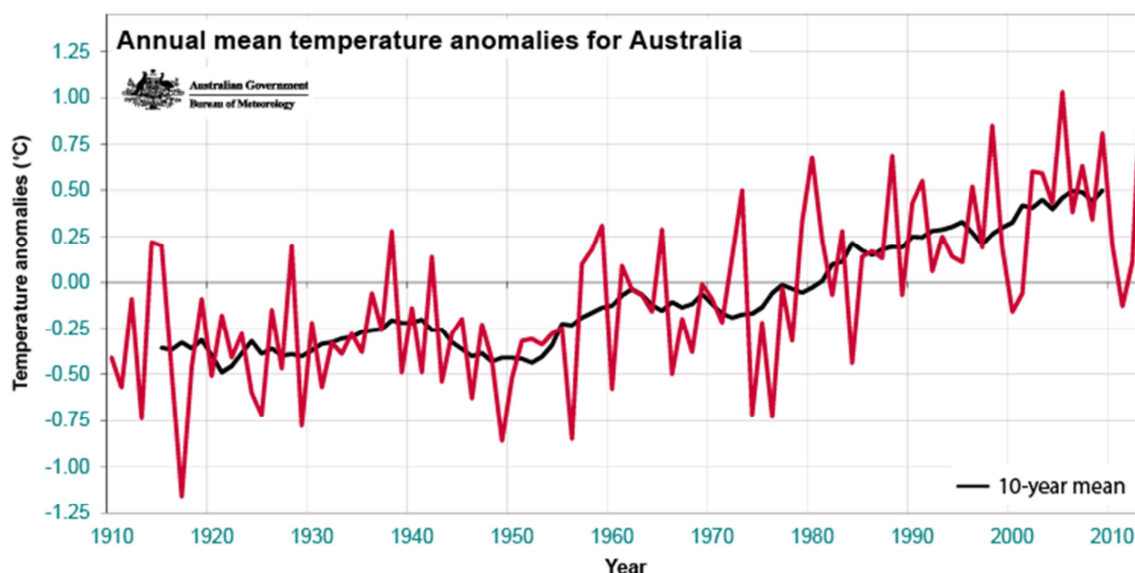


Figure 1: Annual mean temperature anomalies for Australia (compared with 1961–1990 average). Source: BOM 2014.

Trout are a cold water fish species and are physiologically vulnerable to warm water and impacts can be seen on distribution, feeding, growth, survival, reproduction and catchability by fishers.

A range of additional factors have also been suggested as contributing to low trout abundances in the lower reaches of North East Victorian rivers. These include stream habitat condition, fishing pressure, predation (e.g. cormorants) and competition with other species (e.g. carp).

At both meetings, there was considerable discussion about what, if any, fisheries management interventions could be adopted to better understand how the fishery is performing and what could be done to improve it.

The high levels of angler concern about the status of river trout fishing in North East Rivers and the social and economic contribution that trout fishing makes to the regional economy warranted further attention. Fisheries Victoria is initiating a research program to address the key questions raised at the public meetings to better understand how the trout fishery is responding to summer conditions and what, if any, interventions may be appropriate. Further details about the Wild Trout Fisheries Management Plan (WTFMP) can be obtained from the DEPI website: [www.depi.vic.gov.au/fishing-and-hunting/recreational-fishing/wild-trout-population-survey/wild-trout-fisheries-management-plan](http://www.depi.vic.gov.au/fishing-and-hunting/recreational-fishing/wild-trout-population-survey/wild-trout-fisheries-management-plan)



## **The Wild Trout Fisheries Management Program will address the following key questions:**

### **Are summer temperatures adversely impacting our river trout fisheries?**

Trout are a cold water fish and high summer water temperatures can reduce feeding and increase mortality. A trout tracking study will use acoustic tags and listening stations in the Delatite River to determine how river trout respond to changes in water temperatures. If trout move when water temperatures increase, where do they go and at what temperature do they move?

### **Is there a decline in wild trout populations and breeding?**

Wild trout populations in rivers rely on natural breeding to spawn young fish. Monitoring trout populations will help us assess annual breeding performance and predict the strength of the next year class of trout. This project will conduct annual fish population surveys in up to twelve priority rivers annually (3–4 sites in each) to provide a 'report card'. This can be compared to historical trout population information in some of these rivers given substantial prior research in many Victorian waters. This project will also consider whether predation and competition from other species is adversely affecting trout populations in rivers. During the survey work, scientists will record information about carp, their size and abundance, along with other possible predators of trout such as cormorants.

### **Is fishing pressure adversely impacting trout populations and the quality of the trout fishery?**

Excessive angler harvest of fish can impact trout populations by decreasing the number of reproductively mature fish. In turn, this can reduce the number of young fish produced in a system. Angler surveys and a 'tag return' program in the Howqua River will help us understand more about catch and harvest levels. It is prudent to regularly test catch limits, closed seasons and equipment restrictions to confirm they are still appropriate. If the project finds evidence that fishing pressure is impacting the fishery, then there may be a need to reconsider fishing regulations including size and bag limits, the closed season or permitted equipment.

### **Are research results well understood by fishers?**

Annual conferences with trout fishers and community groups will help everyone stay informed about the progress and key outcomes of each project from the Wild Trout Fisheries Management Plan. Interested groups can thus better understand the factors at play and consider the best options for maintaining and improving our wild trout fisheries. The

conferences will also provide an opportunity for fishers to hear about the very latest trout fishing developments, from local and international trout experts.

#### **How can we reliably track changes in the angling performance of our trout fisheries?**

There are many angling clubs that record their catches with great diligence. If this information can be shared for use in fisheries management, it may be a cost-effective way to get an indication of fishery performance over time and a means of assessing the impacts from interventions such as stocking and habitat restoration. A trial program using angling club records in fisheries monitoring will be expanded to include the wild trout fisheries in Victoria.

#### **Is reduced trout stocking into Lake Eildon impacting the trout fisheries in its inflowing rivers?**

Fisheries managers are keen to better understand the contribution that trout stocking in Lake Eildon makes to the inflowing river trout populations. Similarly, to better understand the proportion of river fish which return to the lake for some period of their life stage? A study will be undertaken to determine more cost effective and accurate methods of marking stocked trout and allow a better understanding of the relationship between trout populations in Lake Eildon and its feeder rivers.

#### **Have there been changes to bankside vegetation along our rivers? If so, have they affected water temperatures?**

River water temperature is strongly influenced by the nature and extent of stream-side (riparian) shading. Major changes to bankside vegetation (e.g. bushfires and flooding, clearing and replanting) may adversely impact wild trout fisheries. This project will look at the changes to riparian shading and if warranted, the scope to rehabilitate stream side vegetation.

#### **Does trout stocking help wild brown trout river fisheries recover?**

Past research on wild trout fisheries in Victoria and worldwide suggest stocking on top of existing self-sustaining populations is an ineffective strategy to improve the quality of fishing in the long-term. However anglers have a strong affinity with stocking and enjoy the short term benefits of increased catch rate. This project will trial the stocking of two-rivers (Howqua and Upper Goulburn Rivers) with tagged trout to re-assess the effectiveness of this intervention to recover and enhance wild trout fisheries.

### **Murray cod regulation review**

Murray cod are an iconic Australian native fish species that is highly valued by recreational fishers. In 2011 and 2012, Victorian Department of Environment and Primary Industries scientists examined current and past bag and size limits against a range of harvest slot limits. The use of a variety of harvest slot limits as an alternative fishery management tool to optimise Murray cod fishery benefits was assessed.

Harvest slot lengths lower the amount of time a fish is vulnerable to angling. The fish is only vulnerable to being taken as it grows through the harvest slot limits. Social and compliance issues associated with introducing harvest slot limits in the context of a Murray-Darling Basin Murray cod fishery were also examined.

The scientific analyses showed that harvest slot limits of 40 to 60 cm, 50 to 60 cm and 50 to 70 cm, when compared to current and past regulations, will build Murray cod populations over time, increasing the number of Murray cod available for recreational anglers to harvest and increase the number of larger mature brood fish which are protected by regulation. In light of this research, a series of options were presented to a reference group of recreational anglers, fisheries managers and researchers. The reference group strongly supported implementation of a 50 to 70 cm harvest slot limit state-wide for Murray cod, with a reduction in bag limit from 2 to 1 fish per day in rivers whilst maintaining the bag limit in impoundments at 2 fish per day. Further discussions with NSW Fisheries saw a slight modification to a 55 to 75 cm harvest slot length that will be consistent across NSW and Victoria.

Murray cod will thus be protected from harvest until they reach 55 cm (at 5–6 years of age) and then protected from harvest once they grow to over 75 cm in length (at 8–9 years of age). This conservative slot limit protects larger fish from harvest and the Murray cod population benefits from this because larger fish produce significantly more eggs than smaller fish. This in turn results in more fish being available to harvest in the new slot. This is the primary reason why conservative harvest slot limits are more beneficial to Murray cod populations and fisheries in terms of greater sustainability, presence of larger fish and harvest potential.

This advice and subsequent discussion with key recreational fishing stakeholder bodies led Fisheries Victoria to propose the introduction of these regulation changes by a Fisheries Notice. It is believed that these regulation changes will further improve populations and fisheries of Murray cod in Victoria.

The suggested regulation changes were released for public comment in July 2014 and received significant support. As a consequence the regulations are to be implemented.



## Recreational Fishing Initiative

The Recreational Fishing Initiative is a four year program, in addition to recreational fishing licence revenue, investing in projects that improve recreational fishing opportunities over.

Fisheries Victoria has been working to implement year three of the Recreational Fishing Initiative across a range of programs aimed at building recreational fishing facilities and opportunities across Victoria. The key programs of the Recreational Fishing Initiative are:

### **Better angler access and facilities**

- Constructing recreational fishing reefs
- Improving angler access to piers, jetties and roads
- Upgrading boat launching facilities
- Building fishing platforms and cleaning tables.

### **Fish stocking**

- Stocking popular fish species in waterways to maintain or enhance recreational fishing
- Funding the operation of Fisheries Victoria's native fish production hatchery at Snobs Creek
- Developing new fisheries with Australian bass, estuary perch, trout cod, Macquarie perch and freshwater catfish.

### **Improving angler engagement**

- Conducting public forums to gather recreational angler ideas about recreational fishing improvements
- Improving advisory information for anglers, including the Victorian Recreational Fishing iPhone application, multi-lingual signage, publications and the DEPI website.

### **Improving fish movement**

- Installing fish ladders in conjunction with water and land managers.

### **Protecting spawning fish from commercial netting**

- Working with recreational and commercial anglers to implement measures to protect spawning fish stocks near some river mouths.

### **Strengthening fisheries compliance**

- Targeted fisheries patrols over peak fishing periods on weekends, public holidays and at night.

### **Fisheries research**

- Conducting priority research and development for recreational fishing.



Recreational Fishing Initiative creating additional angler access Gunbower Creek boat ramp. Photo Greg Barber North Central CMA

## Key outcomes 2013/14

The following is an overview of selected state-wide freshwater fisheries management activities conducted over the year that support recreational fishing.

### Inland Recreational Fisheries Management Priorities

DEPI Fisheries managers undertook nine workshops in 2013-14 across regional Victoria to identify key priorities for the management of Victorian inland fishing. The goals of these workshops were to propose and discuss ideas that would improve riverine health and assist Fisheries Victoria in meeting two of its key inland fisheries management objectives including protecting key fisheries assets and advocating for fish habitat recovery works.

Each workshop generated a list of 6–10 priorities specific to each Catchment Management Authority (CMA) region. These priorities were incorporated into each CMA Regional Waterway Strategy and will guide investment for the next eight years.

These workshops were a great example of stakeholder engagement and cross government collaboration and included representatives from:

- 70 key recreational fishing stakeholder groups
- the nine regional CMAs
- Fish Habitat Network
- Fisheries Victoria management and compliance staff.

The latest round of Recreational fishing licence (RFL) funding has recently been announced and seven of the 19 large grants aligned with the priorities developed at these workshops were successful.

These seven successful projects accounted for 51% of all large grant RFL funding totalling \$806,429. Additionally, a further \$1,200,162 was committed to these projects as in-kind co-funding by the applicants.

This means that collectively over two million dollars has been invested into common priorities identified by recreational fishers, CMAs and Fisheries Victoria at the workshops.

## Recreational Fishing Application for Smartphones

Fisheries Victoria's Recreational Fishing Smartphone Application is a very popular and an extremely useful tool for recreational fishers. The first of its kind in Australia, the free application is based on the Victorian Recreational Fishing Guide and features colour illustrations of more than 65 species found in Victoria's waterways.

Anglers can use the application to identify their catch and confirm size and bag limits, as well as access information on permitted equipment and closed seasons.

The application also allows anglers to buy a recreational fishing licence online, and includes a GPS locator for finding retail outlets that sell licences, bait and tackle.

Anglers can use the application to connect to Fisheries Victoria's illegal fishing reporting line (13FISH), DEPI's Customer Service Centre and the Water Police. It also provides valuable information on Marine Park boundaries.

Fisheries Victoria is looking to expand and improve this product and any suggestions for the further development of the application can be emailed to [fishingapp.feedback@depi.vic.gov.au](mailto:fishingapp.feedback@depi.vic.gov.au).

## Recreational Fishing Forums 2014

Fisheries Victoria is always open to new ideas and ways to keep improving recreational fisheries opportunities for Victorian anglers. Each year a series of regional fishing forums are held throughout regional Victoria to update interested stakeholders about Fisheries Victoria's management activities and hear their suggestions about ways in which recreational fishing can be improved in their region. In July and August 2014 DEPI hosted 10 forums across Victoria at the following locations: Warrnambool; Greensborough; Albert Park; Mornington; Nagambie; Bendigo; Lakes Entrance; Torquay; Ballarat and Wodonga.

The forums are advertised widely in the media each year and anglers may also send in ideas online. See the Fisheries Victoria website for further details or email [improving.fishing@depi.vic.gov.au](mailto:improving.fishing@depi.vic.gov.au).



Fisheries Manager Taylor Hunt presents Murray cod information to the Bendigo Regional Roundtable Forum August 2014. Photo John Douglas

## Developing New Fisheries

Under the Recreational Fishing Initiative and with funds raised from the sale of recreational fishing licences, Fisheries Victoria is managing a range of projects aimed at improving recreational fishing outcomes for Victorian anglers and their families. The following is a progress report on key projects aimed at developing new fisheries:

### Chinook salmon

Over the last 40 years, Chinook salmon have been bred at Snobs Creek and stocked into western district lakes where they have created exceptional trophy fisheries. At its peak, this fishery was one of the few land locked Chinook salmon fisheries in the world, generating extraordinary angler interest, participation and associated regional economic and social benefits.

Fisheries Victoria has continued developing the Chinook salmon fisheries in Lakes Bullen Merri and Purrumbete, near Camperdown in South West Victoria.

More information regarding the Chinook salmon stocking program can be viewed at:

[www.depi.vic.gov.au/fishing-and-hunting/recreational-fishing/fish-stocking/chinook-salmon-stocking-returns](http://www.depi.vic.gov.au/fishing-and-hunting/recreational-fishing/fish-stocking/chinook-salmon-stocking-returns)





Chinook salmon to 3 kilograms in weight are being successfully targeted by anglers in Lakes Bullen Merri and Purrumbete. Photo Ben Bremer



Creel surveys interview anglers in the field to collect catch and social data. Photo John Douglas

### **Building Northern Native Fisheries**

Fisheries Victoria has completed three years of increased fish stocking in the Loddon and Campaspe Rivers, Kow Swamp and Gunbower Creek. An assessment of fish and anglers was undertaken in 2014 and the results were mixed.

### **Inland Reefs — Kerang Lakes**

Artificial reefs have been deployed into Lakes Boga and Kangaroo. The wooden structures, known as 'fish motels', will provide cover for juvenile and larger native fish. Nearly 100 motels were deployed in Lake Boga and Lake Kangaroo in September 2014.

The project is a collaboration between Goulburn Murray Water, Fisheries Victoria, Gannawarra Shire and the local community.

The effectiveness of installed habitat will be evaluated to determine whether it meets the desired objectives. Data will be collected from the recreational fishery in a cost-effective manner to inform the development of future habitat installation projects.



Wooden 'fish motels' of the type deployed into the Kerang lakes to increase fish habitat. Photo Martin Casey



### **Estuary perch**

Estuary perch fingerlings are becoming more available as a result of considerable effort to collect brood stock. Estuary perch trial stockings are underway in several lakes; including Straun, Hamilton, Beaufort, Bolac, and Albert Park Lakes and Devilbend Reservoir. The Werribee River downstream of the Melton Reservoir around the Werribee township, and Melton Reservoir are potential stocking locations currently being investigated.

### **One Million Murray cod stocked into Lake Eildon**

Fisheries Victoria conducted a program to boost Murray cod in Eildon Lake. The project, titled 'Murray Cod Million — Lake Eildon', released over one million Murray cod into the lake over the past three years. The stocking component of this work has ended and follow-up assessments have been completed to monitor the success of the stockings. A targeted angler interview creel survey was also completed to compare with one taken before the stockings proceeded. The project was supported through RFL funds. The final report will be included in the 'Monitoring fish stockings in Victoria: 2014 native fish surveys report' due for publishing late 2014.



Anglers are reporting the capture of a growing number of juvenile cod from Lake Eildon. Research confirms that these fish were stocked as part of the Lake Eildon Million Murray cod project and it augurs well for the future fishery. Photo John Douglas

### **Australian bass stocking update**

Anglers are starting to report an increase in the captures of small Australian bass from several locations where fingerlings have been stocked. Blue Rock Lake has been particularly productive, showing early indications of a developing fishery. This lake was recently selected for an Australian bass kayak angling competition. The success of initial Australian bass stockings in Cowwarr Weir, Lake Glenmaggie, the Macalister River downstream of Lake Glenmaggie, and the emerging popularity of these developing fisheries will be built upon over the next three years. Future expansion of the Australian bass stocking program into additional Gippsland waters is on the radar.

Fisheries Victoria is using RFL funding to work in partnership with the East Gippsland Catchment Management Authority to improve angler access and re-establish Australian bass populations in the Nicholson River.

The Australian bass stocking program was extended to include the Tambo River and higher stocking numbers are planned for the Mitchell River and additional sites and streams in the Gippsland area. Lake Guthridge in Sale will be stocked, dependant on a Translocation Evaluation Panel (TEP) application.

The successful RFL grant has allowed the procurement of more Australian bass for the next three years and the expansion of the Gippsland Australian bass fishery.

### **Re-establishing Macquarie perch populations**

Fisheries Victoria continues to work closely with Native Fish Australia, Arthur Rylah Institute and the Goulburn Broken Catchment Management Authority to develop Macquarie perch captive breeding techniques and re-establish Macquarie perch populations.

In the last few years Macquarie perch have been released into Expedition Pass Reservoir, William Hovell Lake, Hollands Creek, Goulburn River at Trawool and the Ovens River at Whorouly Bridge and Rocky Point near Gapstead. The focus is now on the mid-Ovens River from Oxley Flats to Gapstead where stocking and translocation of adult Macquarie perch is being undertaken to re-establish the species in this river. In 2014, Fisheries stocked 73,000 Macquarie perch fingerlings; including, 27,500 into the Goulburn River, near Trawool; 40,500 into the Ovens River, near Myrtleford; and 5,000 into Expedition Pass, near Castlemaine. Researchers at Arthur Rylah Institute also caught, translocated and released sub-adult Macquarie perch from Lake Dartmouth to rebuild populations.

### **Stocked fish assessment**

Fish surveys were conducted in several native fish stocking locations to assess the effectiveness of stocking. The fish were marked prior to release which assisted researchers identify hatchery origin fish.

Waters surveyed included Lake Eildon, Goulburn River (Nagambie Lakes), Campaspe River, Gunbower Creek, Loddon River and Kow Swamp with results varying between locations. In impoundments such as Eildon Lake, the vast majority of the fish recovered were stocked. This could indicate that minimal natural recruitment has occurred in the last few years and that the stocking program has been successful at increasing Murray cod numbers. These fish are growing to a size where they will begin to enter the fishery in the next few years. More work is being done to assess the effectiveness of the stocking program throughout the state, and fisheries managers are encouraged by observed results.

The final report on the assessment of the marked fish will be included in the 'Monitoring fish stockings in Victoria: 2014 native fish surveys report.'

## **Recreational Fishing Grants Program (RFGP)**

Every year the Victorian Government, through the Recreational Fishing Licence Trust Account, disburses revenue derived from the sale of Recreational Fishing Licences to projects that will improve recreational fishing in Victoria.

Since its inception in 2001, the Recreational Fishing Grants Program (RFGP) has funded 507 projects, worth more than \$20.9 million throughout Victoria. The RFGP comprises three separate programs including:

- A Small Grants Program, that is continually open to fund small projects (up to \$5,000 - GST Exclusive)
- A Large Grants Program (for projects from \$5,001 to \$100,000)
- A Commissioning Program for large priority projects (generally in excess of \$100,000).

The trust has also allocated an annual grant of \$200,000 to Fisheries Victoria to secure additional native and salmonid species for the state-wide stocking program.

More information on the RFGP activities is available at the Fisheries Victoria website:

[www.depi.vic.gov.au/fishing-and-hunting/recreational-fishing/fishing-licence/your-fishing-licence-fees-at-work](http://www.depi.vic.gov.au/fishing-and-hunting/recreational-fishing/fishing-licence/your-fishing-licence-fees-at-work)

Details on how to access grants are provided in the 'Fishing for Grants' section of this report.

## **Fishing for Grants?**

Grants are available to help improve recreational fishing and facilities. Two options for obtaining funding are through the **Recreational Fishing Licence Trust Fund** or the **Recreational Fishing Initiative**.

### **RFL Trust Fund Small Grants**

The aim of the Small Grants Program is to provide funding of up to \$5,000 (GST exclusive) for small projects which benefit public recreational fishing in Victoria.

The Grants are available to fishing clubs and other organisations. Information regarding the Small Grants Program Conditions & Guidelines can be obtained from the Fisheries Victoria website:

[www.depi.vic.gov.au/fishing-and-hunting/fisheries/recreational-fishing-grants-program/small-grants-program](http://www.depi.vic.gov.au/fishing-and-hunting/fisheries/recreational-fishing-grants-program/small-grants-program)

To apply for a small grant, applicants are required to use the online application form (at the web address above).

Further information on applying for a small grant can be obtained on the web or contact:

The Secretariat, Recreational Fishing Grants Program, GPO Box 4440 Melbourne, Victoria 3001 Tel. (03) 9658 4779 or email: [rec.fishinggrants@depi.vic.gov.au](mailto:rec.fishinggrants@depi.vic.gov.au)

### **Recreational Fishing Initiative funding**

Recreational fishing generates significant regional economic activity and growth whilst providing substantial social benefits for families and communities. The Recreational Fishing Initiative will bring many benefits to Victorian anglers and will ensure that Victoria remains a top fishing destination.

Funding from the Recreational Fishing Initiative may be available to clubs, agencies and organisations wishing to improve access and facilities related to recreational fishing.

Community ideas on how to improve recreational fishing access and infrastructure in a local area can be sent to Fisheries Victoria by email: [recfish.improvements@depi.vic.gov.au](mailto:recfish.improvements@depi.vic.gov.au)

Further information about the Recreational Fishing Initiative, as well as an application form with conditions and guidelines can be found at:

[www.depi.vic.gov.au/fishing-and-hunting/recreational-fishing/recreational-fishing-initiative/funding-available-for-better-access-and-facilities](http://www.depi.vic.gov.au/fishing-and-hunting/recreational-fishing/recreational-fishing-initiative/funding-available-for-better-access-and-facilities)

## **Submitting a change to the fish stocking program**

Fisheries Victoria's stocking program is constantly evolving as waterways and climatic conditions change. The need, or otherwise, to alter stocking regimes, in terms of the performance of a fishery or changed environmental conditions, is discussed annually at the Vic Fish Stock meetings.

Anglers wishing to submit a proposal to change the stocking program may do so by contacting Fisheries Victoria (see contact details below). Suggestions are best submitted through the representational fishing bodies to gain their support.

This current Vic Fish Stock document is a good reference to the current stocking program. Copies of the report can be accessed at the Fisheries Victoria website [www.depi.vic.gov.au/fishing-and-hunting/fisheries](http://www.depi.vic.gov.au/fishing-and-hunting/fisheries) or by requesting a hard copy from John Douglas (03 5770 8045).

The Fish Stocking for Recreational Purposes Policy is also relevant and anyone wishing to make a submission is encouraged to make themselves familiar with the document before doing so. A copy of the policy is provided in the back of this document and it is also available online at the Fisheries Victoria website.

A checklist of suggested subjects to address when making a submission is provided in Appendix 3.

### **Fisheries Victoria contacts —**

#### **For inland fisheries management assistance:**

Manager Inland Fisheries:  
Anthony Forster 03 9637 9197

Fish stocking enquiries  
John Douglas 03 5770 8045

#### **For compliance assistance:**

To report fisheries offences call 13 FISH (☎13 3474).

#### **For general enquiries:**

Call the DEPI Customer Service Centre on 136 186 or visit [www.depi.vic.gov.au](http://www.depi.vic.gov.au)

## **Report illegal fishing call 13 FISH (☎13 3474)**

### **Helpful information includes:**

- ♦ Time and date of activity
- ♦ Vehicle/boat registration
- ♦ Place
- ♦ Activity
- ♦ Number of people involved
- ♦ Equipment

Information provided will assist in planning patrols and enforcement operations when no immediate field response is possible.

# Appendix 1 – Proposed fish stockings

## Using the Tables

The following tables present a summary of five Vic Fish Stock consultation meetings held across regional Victoria in 2014. They reflect the key outcomes from the minutes recorded at each meeting that were circulated to all participants prior to finalisation. Proposals for stockings were received prior to meetings. These proposals were discussed and a final position determined by consensus. The proposals were then costed against budgets and fish production capabilities and modified to suit but maintaining the intention of the stocking. The outcomes represent the shared decision of the meeting attendees resulting from this assessment.



## Gippsland

Water	Species	Stocking schedule	Type	Planned for 2014-15:	Comments:
Avon River (Stratford to Valencia Creek)	Australian bass	Annual stocking		5,000	Stock Australian bass to supplement past Australian bass broodfish collection. Increase annual stocking to 5,000 Australian bass. Last year of a 5 year stocking program.
Blue Rock Lake (Willow Grove)	Australian bass	Annual stocking		25,000	Developing Australian bass fishery with increased angler visitation.
Blue Rock Lake (Willow Grove)	Brown trout	Annual stocking		10,000	
Blue Rock Lake (Willow Grove)	Rainbow trout	Annual stocking		7,000	
Cowwarr Weir (Cowwarr)	Australian bass	Annual stocking		2,000	Stock Australian bass to supplement past Australian bass broodfish collection. Last year of a 5 year stocking program.
Freestone Creek (Briagolong)	Australian bass			2,000	Stock 2,000 Australian bass for a 3 year trial. Translocation authority required for Australian bass stocking.
Glenmaggie Lake (Glenmaggie)	Australian bass	Annual stocking		10,000	Continue Australian bass stocking.
Glenmaggie Lake (Glenmaggie)	Rainbow trout	Annual stocking		2,000	
Guthridge Lake (Sale)	Rainbow trout	Twice yearly	School Holiday Stocking	500	Stock 250 rainbow trout for 2nd and 3rd Term School Holidays.
Guthridge Lake (Sale)	Australian bass	Annual stocking		1,000	Stock 1,000 Australian bass for a 3 year trial to create an urban Australian bass fishery. Translocation authority required for Australian bass stocking.
Heyfield Racecourse Lake (Heyfield)	Rainbow trout	Twice yearly	School Holiday Stocking	400	Stock 200 rainbow trout for 2nd and 3rd Term School Holidays.
Hyland Lake (Churchill)	Rainbow trout	Three per year	School Holiday Stocking	2,000	Stock 750 rainbow trout for 2nd and 3rd Term School Holidays plus 500 rainbow trout for Fishing Week Event in November.
Macalister River (D/s of L. Glenmaggie)	Australian bass	Annual stocking		4,000	Stock Australian bass downstream of Glenmaggie Lake. Increase annual Australian bass stocking to 4,000. Last year of a 5 year stocking program.

Water	Species	Stocking schedule	Type	Planned for 2014-15:	Comments:
Macalister River (D/s of L. Glenmaggie)	Brown trout	Annual stocking		2,000	Stock brown trout downstream of Glenmaggie Lake.
Macalister River (U/s Lake Glenmaggie to Licola)	Australian bass	Annual stocking		5,000	Stock 5,000 Australian bass for a 3 year trial.
Macalister River (U/s of L. Glenmaggie to Junction with the Wellington River)	Rainbow trout	Annual stocking		9,000	Stock rainbow trout upstream of Glenmaggie Lake to Junction with the Wellington River.
Mitchell River (Angusvale to Junction of Dargo River)	Australian bass	Annual stocking		10,000	Stock Australian bass to supplement past Australian bass broodfish collection. Increase annual Australian bass stocking to 10,000. Last year of a 3 year stocking trial.
Morwell Lake (Morwell)	Rainbow trout	Three per year	School Holiday Stocking	2,000	Stock 750 rainbow trout for 2nd and 3rd Term School Holidays plus 500 rainbow trout for Fishing Week Event in October.
Narracan Lake (Moe)	Australian bass	Annual stocking		10,000	Maintain Australian bass stocking. Last year of a 5 year Australian bass stocking program. Priority for a survey to determine stocking success.
Narracan Lake (Moe)	Brown trout	Annual stocking		7,000	Priority for a survey to assess brown trout stocking. Brown trout stocking will be reviewed on the outcome of the survey. Few reports of brown trout by anglers.
Narracan Lake (Moe)	Rainbow trout	Annual stocking		3,000	Priority for a survey to assess rainbow trout stocking. Rainbow trout stocking will be reviewed on the outcome of the survey. Few reports of rainbow trout from anglers.
Nicholson River (Old Weir Site)	Australian bass	Annual stocking		10,000	Stock Australian bass above Nicholson Weir site. Last year of a 3 year stocking trial.
Rainbow Creek (Heyfield/Cowwarr)	Australian bass			2,000	Stock Australian bass for a 3 year trial.
Tambo River (Bruthen to Junction with the Haunted Stream)	Australian bass	Annual stocking		10,000	Enhance current Australian bass stocks in Tambo River. Stock up to the Junction of the Tambo River and Haunted Stream.
Thomson River (D/s Cowwarr Weir)	Australian bass	Annual stocking		5,000	Stock Australian bass for a 3 year trial.

Water	Species	Stocking schedule	Type	Planned for 2014-15:	Comments:
Traralgon Creek (Downeys Lane to the Junction with the La Trobe River)	Australian bass	Annual stocking		3,000	Stock Australian bass for a 3 year trial.
Tyers River (Wirilda Park)	Australian bass	Annual stocking		5,000	Stock Australian bass for a 3 year trial. Stock above and below weir.
Valencia Creek (U/s Valencia Creek)	Australian bass	Annual stocking		4,000	Stock Australian bass for a 3 year trial.
Wonnangatta River (Junction of Wongungarra River to Junction of the Dargo River)	Australian bass	Annual stocking		10,000	Stock Australian bass for a 3 year trial.

## Grampians and Barwon South West

Water	Species	Stocking schedule	Type	Planned for 2014-15:	Comments:
Alexandra Lake (Ararat)	Rainbow trout	Twice yearly	School Holiday Stocking	600	Stock 300 rainbow trout for 2nd and 3rd Term School Holidays.
Aringa Reservoir (Port Fairy)	Brown trout	Annual stocking		500	
Aringa Reservoir (Port Fairy)	Rainbow trout	Annual stocking		1,000	
Bannockburn Lagoon (Bannockburn)	Rainbow trout	Twice yearly	School Holiday Stocking	600	Stock 300 rainbow trout for 2nd and 3rd Term School Holidays. Due to Seagull Lake water quality issues, fish destined for Seagull Lake split up into St Augustines Water Hole, Bannockburn Lagoon and Lethbridge Lake.
Beaufort Lake (Beaufort)	Brown trout	Annual stocking		1,000	Not stocked with brown trout due to low water level in 2014. Future stocking dependant on sustainable water level.
Beaufort Lake (Beaufort)	Estuary perch			1,000	Stocking of estuary perch dependant on availability. Stocked with 1,000 estuary perch stocked 2013-14.
Beaufort Lake (Beaufort)	Rainbow trout	Annual stocking		1,000	Not stocked with rainbow trout due to low water level in 2014. Future stocking dependant on sustainable water level.
Bellfield Reservoir (Halls Gap)	Chinook salmon				Chinook salmon stocked in 2013 as part of Chinook salmon stocking trial. Stocking of Chinook salmon dependant on availability and performance of fishery. Not stocked in 2014 due to low fish availability, scheduled to be stocked 2016.
Bellfield Reservoir (Halls Gap)	Rainbow trout	Annual stocking		10,000	
Bolac Lake (Lake Bolac)	Estuary perch	Annual stocking		15,000	Stocking of estuary perch dependant on availability. Stocked with 35,000 estuary perch stocked 2013-14.
Bolac Lake (Lake Bolac)	Rainbow trout	Annual stocking		8,000	Increase of annual stocking of rainbow trout stocking to 8,000.
Boorooopki Swamp (Minimay)	Murray cod				Boorooopki Swamp is presently dry. Consider stocking when refills and has water security. Translocation authority required to stock Murray cod.



Water	Species	Stocking schedule	Type	Planned for 2014-15:	Comments:
Bostock Reservoir (Ballan)	Brown trout	Annual stocking		2,500	
Bostock Reservoir (Ballan)	Chinook salmon				Chinook salmon stocked in 2013 as part of Chinook salmon stocking trial. Also received an additional stocking of 700 Chinook salmon averaging 523 g in 2014. Continuation of stocking of Chinook salmon dependant on availability of Chinook salmon and performance of fishery. Next stocking scheduled for 2016.
Bostock Reservoir (Ballan)	Rainbow trout	Annual stocking		2,500	
Bringalbert Lake (Bringalbert)	Golden perch	Annual stocking		5,000	Confirmation of water levels now suitable for stocking. Stocked with 5,000 golden perch in 2014.
Bullarto Reservoir (Bullarto)	Brown trout	Annual stocking		500	
Bullarto Reservoir (Bullarto)	Rainbow trout	Annual stocking		500	
Bullen Merri Lake (Camperdown)	Brown trout	Annual stocking		5,000	Current salmonid stocking program in place, no change to stocking levels until program assessment.
Bullen Merri Lake (Camperdown)	Chinook salmon	Annual stocking			Plan for 45,000 Chinook salmon to be stocked across Lakes Bullen Merri and Purumbete revised to continue the recovery of the broodstock population at Snobs Creek hatchery. Ongoing availability of yearlings is anticipated from 2016.
Bullen Merri Lake (Camperdown)	Rainbow trout	Annual stocking		5,000	Current salmonid stocking program in place, no change to stocking levels until program assessment.
Bungal Dam (Bungal) Also known as Lal Lal Reservoir	Brown trout	Annual stocking			Request to stock brown trout not supported. Lal Lal Reservoir is a domestic water storage controlled by Barwon Water, servicing both Geelong and Ballarat. This is a private water with no public access.
Burrumbeet Lake (Burrumbeet)	Brown trout	Annual stocking		5,000	Burrumbeet Lake is suffering from low water level and poor water quality. Not stocked in 2014. Reinstate stocking when water level sufficient and water quality improves.
Burrumbeet Lake (Burrumbeet)	Rainbow trout	Annual stocking		10,000	Burrumbeet Lake is suffering from low water level and poor water quality. Not stocked in 2014. Reinstate stocking when water level sufficient and water quality improves.

Water	Species	Stocking schedule	Type	Planned for 2014-15:	Comments:
Calembeen Lake (Creswick)	Golden perch	Triennial stocking		200	Calembeen Lake stocked every two years. Next golden perch stocking 2014-15.
Calembeen Lake (Creswick)	Rainbow trout	Twice yearly	School Holiday Stocking	400	Stock 200 rainbow trout for 2nd and 3rd Term School Holidays.
Carlisle River (Carlisle River)	Brown trout	Annual stocking			Request to stock with brown trout not supported. This is a tributary of the Gellibrand River. The Gellibrand River supports a self-sustaining wild trout population.
Carlisle River (Carlisle River)	Rainbow trout	Annual stocking			Request to stock with rainbow trout but request not supported. This is a tributary of the Gellibrand River. The Gellibrand River supports a self-sustaining wild trout population.
Carpolac Lake (Carpolac)	Golden perch	Annual stocking		5,000	No golden perch stocking at present due to uncertainty regarding long term water security. Last stocked with 5,000 golden perch in 1998. Review water security issues in 2014-15 and stock if water available. Not stocked with golden perch in 2013-14. Request to leave on stocking list.
Cartcarrong Lake (Winslow)	Brown trout	Annual stocking		1,000	
Cato Lake (Stawell)	Rainbow trout	Twice yearly	School Holiday Stocking	600	Stock 300 rainbow trout for 2nd and 3rd Term School Holidays.
Charlegrark Lake (Boorooopki)	Murray cod	Annual stocking		5,000	Annual stocking of Murray cod. An additional 345 yearling Murray cod were purchased from the Trust Fund and stocked in 2013-14.
Cobden Lake (Cobden)	Rainbow trout	Twice yearly	School Holiday Stocking	400	Stock 200 rainbow trout for 2nd and 3rd Term School Holidays.
Colac Lake (Colac)	Estuary perch	Annual stocking			Permission to stock estuary perch obtained. Leave on stocking list and review stocking in future. Stocking of estuary perch dependant on numbers available and on suitable water level security.
Colac Lake (Colac)	Rainbow trout	Annual stocking		5,000	Extremely large lake. Permission to stock rainbow trout obtained. Potential to trial as a put and take fishery stocked with on-grown rainbow trout (minimum 150 g) to create a winter fishery. Stocking dependant on suitable water security level and fish availability. Colac Lake is large and requires a significant investment.
Colbrook Reservoir (Colbrook)	Brown trout	Triennial stocking			Triennial stocking of brown trout. Stocked in 2014 next stocking of 600 brown trout in 2017.

Water	Species	Stocking schedule	Type	Planned for 2014-15:	Comments:
Coleraine Lagoon (Coleraine)	Rainbow trout	Twice yearly	School Holiday Stocking	500	Stock 250 rainbow trout for 2nd and 3rd Term School Holidays.
Cosgrave Reservoir (Creswick)	Brown trout	Annual stocking		1,000	
Cosgrave Reservoir (Creswick)	Rainbow trout	Annual stocking		1,000	
Dean Reservoir (Dean)	Brown trout	Annual stocking		500	
Dean Reservoir (Dean)	Rainbow trout	Annual stocking		500	
Deep Lake (Derrinallum)	Brown trout	Annual stocking		1,000	Deep Lake was last stocked in 2013 with brown trout when water level was sufficient. Not stocked with brown trout in 2014 due to low water level. Annual stocking of brown trout dependant on suitable water level.
Deep Lake (Derrinallum)	Chinook salmon	Annual stocking			1,000 Chinook salmon stocked in 2013 as part of a Chinook salmon stocking trial. Additional stockings of Chinook salmon dependant on success of trial, the performance of the fishery and fish availability. Very low water level in 2014 and not stocked with Chinook salmon. Next Chinook salmon stocking in 2016 given suitable water level.
Deep Lake (Derrinallum)	Rainbow trout	Annual stocking		1,000	Deep Lake last stocked in 2013 with rainbow trout when water level was sufficient. Not stocked with rainbow trout in 2014 due to low water level. Annual stocking is 1,000 rainbow trout. Request to increase rainbow trout stocking not supported.
Dunkeld Arboretum (Dunkeld)	Rainbow trout	Twice yearly	School Holiday Stocking	400	Stock 200 rainbow trout for 2nd and 3rd Term School Holidays.
Elingamite Lake (Cobden)	Brown trout	Annual stocking		2,000	
Elingamite Lake (Cobden)	Chinook salmon	Annual stocking			Elingamite Lake is being trialled as a triploid Chinook salmon water. Annual stocking of 1,000 triploid Chinook salmon in 2013 as part of triploid Chinook salmon stocking trial. Additional stockings of triploid Chinook salmon dependant on returns to anglers and fish availability of yearling triploid Chinook salmon. No triploid Chinook salmon available in 2014. Next stocking 2016

Water	Species	Stocking schedule	Type	Planned for 2014-15:	Comments:
Elingamite Lake (Cobden)	Rainbow trout	Annual stocking		1,000	Elingamite Lake is being trialled as a triploid rainbow trout water.
Esmond Lake (Ballarat)	Rainbow trout	Twice yearly	School Holiday Stocking	500	Stock 250 rainbow trout for 2nd and 3rd Term School Holidays.
Ess Lagoon (Casterton)	Rainbow trout	Twice yearly	School Holiday Stocking	1,000	Stock 500 rainbow trout for 2nd and 3rd Term School Holidays.
Fyans Lake (Halls Gap)	Brown trout	Annual stocking		6,000	Fisheries Victoria will endeavour to assist if suitable sized fish are available for planting prior to the Oceania's Fly Fishing Championships in the designated waters.
Fyans Lake (Halls Gap)	Rainbow trout	Annual stocking		6,000	
Gellibrand River	Brown trout	Annual stocking			Request to stock brown trout not supported.
Gellibrand River	Rainbow trout	Annual stocking			Request to stock rainbow trout not supported.
Gilleard Lake (Allansford)	Brown trout	Annual stocking		1,000	
Gilleard Lake (Allansford)	Rainbow trout	Annual stocking		1,000	
Glenlyon Dam (Glenlyon)	Rainbow trout	Twice yearly	School Holiday Stocking	400	Stock 200 rainbow trout for 2nd and 3rd Term School Holidays.
Gong Gong Reservoir (Brown Hill)	Brown trout	Annual stocking		1,000	Gong Gong Reservoir is a new water. Annual stocking of 1,000 brown trout.
Gong Gong Reservoir (Brown Hill)	Rainbow trout	Annual stocking		500	Gong Gong Reservoir is a new water. Annual stocking of 500 rainbow trout.
Great Western Racing Recreation Reserve Lake (Great Western)	Rainbow trout	Annual stocking	School Holiday Stocking	200	Stock 200 rainbow trout for 3rd Term School Holidays.



Water	Species	Stocking schedule	Type	Planned for 2014-15:	Comments:
Green Hill Lake (Ararat)	Brown trout	Annual stocking		2,000	Green Hill Lake not stocked in 2014 due to low water level. Annual stocking of 2,000 brown trout when water security higher.
Green Hill Lake (Ararat)	Rainbow trout	Annual stocking		2,000	Green Hill Lake not stocked in 2014 due to low water level. Annual stocking of 2,000 rainbow trout when water security higher.
Green Lake (Horsham)	Golden perch	Annual stocking		10,000	Annual stocking of 10,000 golden perch stocked in 2013-14.
Haddon Reservoir (Haddon)	Rainbow trout	Twice yearly	School Holiday Stocking	400	Stock 200 rainbow trout for 2nd and 3rd Term School Holidays.
Hamilton Lake (Hamilton)	Brown trout	Annual stocking		2,000	
Hamilton Lake (Hamilton)	Estuary perch	Annual stocking		5,000	
Hamilton Lake (Hamilton)	Rainbow trout	Annual stocking		3,000	
Hanging Rock Lake (Woodend)	Rainbow trout	Twice yearly	School Holiday Stocking	600	Stock 300 rainbow trout for 2nd and 3rd Term School Holidays.
Hepburn Lagoon (Newlyn)	Brown trout	Annual stocking		5,000	Annual trout stocking. Fisheries Victoria will endeavour to assist if suitable sized fish are available for planting prior to the Oceania's Fly Fishing Championships in the designated waters.
Hepburn Lagoon (Newlyn)	Rainbow trout	Annual stocking		5,000	Annual trout stocking. Fisheries Victoria will endeavour to assist if suitable sized fish are available for planting prior to the Oceania's Fly Fishing Championships in the designated waters.
Hopkins River (Kent Ford Road Bridge to the Junction with the Mount Emu Creek)	Brown trout	Annual stocking		4,000	
Jack Emmett Lagoon (Rupanyup)	Rainbow trout	Annual stocking	School Holiday Stocking	300	Stock 300 rainbow trout for 3rd Term School Holidays.
Jubilee Lake (Daylesford)	Rainbow trout	Twice yearly	School Holiday Stocking	400	Stock 200 rainbow trout for 2nd and 3rd Term School Holidays.

Water	Species	Stocking schedule	Type	Planned for 2014-15:	Comments:
Jubilee Lake (Skipton)	Rainbow trout	Twice yearly	School Holiday Stocking	400	Stock 200 rainbow trout for 2nd and 3rd Term School Holidays.
Konong Wootong Reservoir (Konong Wootong)	Brown trout	Annual stocking		2,000	
Konong Wootong Reservoir (Konong Wootong)	Rainbow trout	Annual stocking		2,000	Request to increase annual stocking of rainbow trout to 2,000 supported.
Lascelles Lake (Hopetoun)	Golden perch	Annual stocking		5,000	
Lascelles Lake (Hopetoun)	Silver perch	Annual stocking		5,000	
Lascelles Lake (Hopetoun)	Catfish	Annual stocking			
Learmonth Lake (Learmonth)	Brown trout	Annual stocking			Stocking of brown trout into Learmonth Lake not supported.
Learmonth Lake (Learmonth)	Rainbow trout	Annual stocking		5,000	Learmonth Lake not stocked in 2014 due to low water level. Considered a rainbow trout water due to water level uncertainty.
Lethbridge Lake (Lethbridge)	Rainbow trout	Twice yearly	School Holiday Stocking	600	Stock 300 rainbow trout for 2nd and 3rd Term School Holidays. Due to Seagull Lake water quality issues, fish destined for Seagull Lake split up into St Augustines Water Hole, Bannockburn Lagoon and Lethbridge Lake
Lismore Golf Club Lake (Lismore)	Rainbow trout	Annual stocking	School Holiday Stocking	100	Lismore Golf Club Lake was last stocked with 100 rainbow trout in 1999 for 2nd Term School Holidays. Fisheries Victoria to investigate public access before stocking proceeds.
Lonsdale Lake (Deep Lead)	Rainbow trout	Annual stocking			Considered a redfin fishery. Lonsdale Lake can have water security issues.
Marma Lake (Murtoa)	Golden perch	Annual stocking		2,000	
Marma Lake (Murtoa)	Rainbow trout	Twice yearly	School Holiday Stocking	600	Stock 300 rainbow trout for 2nd and 3rd Term School Holidays.

Water	Species	Stocking schedule	Type	Planned for 2014-15:	Comments:
McClouds Water Hole (Drysedale)	Rainbow trout	Twice yearly			Request to develop as a school holiday stocking water. More investigation needed regarding access, water quality and facilities before rainbow trout stocking proceeds. Translocation authority and water manager approval required before stocking rainbow trout.
Merri River (Grassmere to Wollaston & Below Weir to Dennington)	Brown trout	Annual stocking		8,000	Annual stocking 2,000 brown trout from Grassmere to Wollaston and 6,000 brown trout below the Weir to Dennington
Merri River	Rainbow trout	Annual stocking			Request to stock rainbow trout not supported as Merri River is considered a brown trout water.
Miga Lake (Miga)	Golden perch	Annual stocing		5,000	Assess water level and security, before stocking of golden perch into Miga Lake. Water security is an issue with long lived species like golden perch.
Minyip Wetlands (Minyip)	Rainbow trout	Annual stocking	School Holiday Stocking	200	Stock 200 rainbow trout for 3rd Term School Holidays.
Moorabool Reservoir (Bolwarrah)	Brown trout	Annual stocking		10,000	Annual stocking. Fisheries Victoria will endeavour to assist if suitable sized fish are available for planting prior to the Oceania's Fly Fishing Championships in the designated waters.
Moorabool Reservoir (Bolwarrah)	Rainbow trout				Request to stock rainbow trout not supported as Moorabool Reservoir is considered a brown trout water.
Mount Emu Creek (Skipton to Darlington & Below Castle Carey Bridge to Panmure)	Brown trout	Annual stocking		3,100	Annual stocking of brown trout into Mount Emu Creek of 3,100 brown trout. Sites to be stocked are Skipton to Darlington 1,100 brown trout; Skipton below Weir 500 brown trout; Pura Pura Bridge 200 brown trout; Chatsworth Road 200 brown trout; Darlington 200 brown trout; and 2,000 brown trout below Castle Carey Bridge to Panmure .
Moyne River (Rosebrook to Toolong North)	Brown trout	Annual stocking		1,000	Stock brown trout between Rosebrook to Toolong North.
Murdeduke Lake (Winchelsea)	Chinook salmon	Annual stocking			Murdeduke Lake is extremely saline and has been unsuitable for stocking due to low water level since 2002. It will not be considered for stocking until salinity and water levels are suitable. Last stocked with 2,000 Chinook salmon in 1999.
Murdeduke Lake (Winchelsea)	Rainbow trout	Annual stocking			Murdeduke Lake is extremely saline and has been unsuitable for stocking due to low water level since 2002. It will not be considered for stocking until salinity and water levels are suitable. Last stocked with 10,000 rainbow trout in 2001.

Water	Species	Stocking schedule	Type	Planned for 2014-15:	Comments:
Natimuk Lake (Natimuk)	Rainbow trout	Annual stocking		5,000	Water level in Natimuk Lake needs to improve before consideration is given for stocking rainbow trout in 2015. Low water level during 2014 and rainbow trout not stocked.
Newlands Lake (Apsley)	Golden perch	Annual stocking			Request to stock with golden perch not supported. Water security not sufficient for long lived golden perch.
Newlyn Reservoir (Newlyn)	Brown trout	Annual stocking		4,000	Fisheries Victoria will endeavour to assist if suitable sized fish are available for planting prior to the Oceania's Fly Fishing Championships in the designated waters.
Newlyn Reservoir (Newlyn)	Rainbow trout	Annual stocking			Last stocked with rainbow trout in 2010. Received a drought recovery stocking of rainbow trout in November 2010. Rainbow trout stocking now discontinued since 2011 as Newlyn Reservoir is considered by anglers to be a brown trout water.
Nhill Lake (Nhill)	Rainbow trout	Annual stocking	School Holiday Stocking	200	Stock 200 rainbow trout for 3rd Term School Holidays.
Old Hamilton Reservoir (Hamilton)	Rainbow trout	Twice yearly	School Holiday Stocking	400	Stock 200 rainbow trout for 2nd and 3rd Term School Holidays.
Pertobe Lake (Warrnambool)	Estuary perch	Annual stocking			Pertobe Lake stocked with 1,000 estuary perch in 2013-14. Other waters are considered to have better estuary perch prospects. Estuary perch are present in nearby Merri and Hopkins River estuaries. Remove from stocking list for estuary perch.
Pertobe Lake (Warrnambool)	Rainbow trout	Twice yearly	School Holiday Stocking	600	Stock 300 rainbow trout for 2nd and 3rd Term School Holidays. Request to increase stocking numbers received but outcome pending Fisheries Victoria investigating drain outlet to see if drain has a screen. Also investigate potential water quality issues.
Police Paddock Dams (Horsham)	Rainbow trout	Annual stocking	School Holiday Stocking	300	Stock 300 rainbow trout for 3rd Term School Holidays.
Purrumbete Lake (Camperdown)	Brown trout	Annual stocking		5,000	Current salmonid stocking program in place, no change to stocking levels until program assessment.
Purrumbete Lake (Camperdown)	Chinook salmon	Annual stocking			Plan for 45,000 Chinook salmon to be stocked across Lakes Bullen Merri and Purrumbete revised to continue the recovery of the broodstock population at Snobs Creek hatchery. Ongoing availability of yearlings is anticipated from 2016.



Water	Species	Stocking schedule	Type	Planned for 2014-15:	Comments:
Purrumbete Lake (Camperdown)	Brook trout				Brook trout stocking trial supported but will be deferred until current salmonid stocking program is completed and assessed. Translocation authority required to stock brook trout, which can be applied for in the meantime.
Purrumbete Lake (Camperdown)	Rainbow trout	Annual stocking		10,000	Current salmonid stocking program in place, no change to stocking levels until program assessment.
Pykes Creek Reservoir (Ballan)	Brown trout	Annual stocking		5,000	Currently developing Pykes Creek Reservoir as a brown trout fishery.
Pykes Creek Reservoir (Ballan)	Chinook salmon				Request for Chinook salmon not supported.
Pykes Creek Reservoir (Ballan)	Rainbow trout	Annual stocking		1,000	Unknown how rainbow trout will perform in Pykes Creek Reservoir. Request supported for a trial stocking for 3 years and assess the success of the rainbow trout stocking in 2017. Rainbow trout stocked subject to availability and translocation authority. If rainbow trout stocking successful Pykes Creek Reservoir could become a mixed salmonid fishery.
Quarry Street Reserve Lake (Trentham)	Rainbow trout	Annual stocking	School Holiday Stocking	200	Stock 200 rainbow trout for 2nd Term School Holidays.
Ratzcastle Lake (Kangawall)	Golden perch	Annual stocking		5,000	Suitable water level required before stocking occurs. Ratzcastle Lake stocked with 5,000 golden perch in 2013-14
Rocklands Reservoir (Balmoral)	Brown trout	Annual stocking		2,500	Annual stocking 2,500 brown trout. Rocklands Reservoir will be stocked with reallocated brown trout from other western district lakes if these lakes are not stocked due to low water levels or being dry.
Rocklands Reservoir (Balmoral)	Rainbow trout	Annual stocking		2,500	Annual stocking 2,500 rainbow trout. Rocklands Reservoir will be stocked with reallocated rainbow trout from other western district lakes if these lakes are not stocked due to low water levels or being dry.
Rocklands Reservoir (Balmoral)	Golden perch	Annual stocking			Request to stock golden perch not supported.
Rocklands Reservoir (Balmoral)	Estuary perch				Request for stocking of estuary perch supported. Fisheries Victoria to investigate. Stocking of estuary perch dependant on translocation authority, fish availability and water priority.
Rocklands Reservoir (Balmoral)	Murray cod				Request for stocking Murray cod not supported.

Water	Species	Stocking schedule	Type	Planned for 2014-15:	Comments:
Saint Augustine's Water Hole (Geelong)	Rainbow trout	Twice yearly	School Holiday Stocking	1,000	Stock 500 rainbow trout for 2nd and 3rd Term School Holidays. Seagull Lake not stocked in 2014 due to high <i>E.coli</i> counts resulting in poor water quality posing a danger to the public. Signs have been erected by the Geelong City Council alerting the public to the high <i>E.coli</i> counts in Seagull Lake. Assess water quality issues prior to stocking in 2015. Fish destined for Seagull Lake stocking reallocated into St Augustines Water Hole, Bannockburn Lagoon and Lethbridge Lake.
Seagull Lake (Geelong)	Rainbow trout	Three per year	School Holiday Stocking	2,200	Generally receives 800 rainbow trout for 2nd and 3rd Term School Holidays plus 600 rainbow trout for Fishing Week Event. Not stocked in 2014 due to high <i>E.coli</i> counts resulting in poor water quality posing a danger to the public. Signs have been erected by the Geelong City Council alerting the public to the high <i>E.coli</i> counts in Seagull Lake. Assess water quality issues prior to stocking in 2015. Fish destined for Seagull Lake reallocated into St Augustines Water Hole, Bannockburn Lagoon and Lethbridge Lake.
Simpson Recreation Reserve Lakes (Simpson)	Rainbow trout	Twice yearly	School Holiday Stocking	400	Stock 200 rainbow trout for 2nd and 3rd Term School Holidays (100 rainbow trout into each lake).
Snake Valley Dam (Snake Valley)	Rainbow trout		School Holiday Stocking	200	Potentially a new Family Fishing Water for the school holiday stocking program. Translocation authority required for stocking rainbow trout. Fisheries Victoria to investigate suitability and access for the public.
St Georges Lake (Creswick)	Brown trout	Annual stocking		1,000	St Georges Lake drained for maintenance works during 2014. Brown trout not stocked in 2014.
St Georges Lake (Creswick)	Golden perch				Request for golden perch stocking supported. Translocation authority required for stocking golden perch.
St Georges Lake (Creswick)	Rainbow trout	Annual stocking		1,000	St Georges Lake drained for maintenance works during 2014. Rainbow trout not stocked in 2014.
Struan Lake (Foxhow)	Estuary perch	Annual stocking		5,000	Part of estuary perch stocking trial. Annually stocked with estuary perch since 2012. Stocking numbers dependant on estuary perch availability.
Taylors Lake (Horsham)	Golden perch	Annual stocking		30,000	
Taylors Lake (Horsham)	Murray cod	Annual stocking		20,000	

Water	Species	Stocking schedule	Type	Planned for 2014-15:	Comments:
Taylors Lake (Horsham)	Silver perch	Annual stocking		20,000	
Tea Tree Lake (Mortlake)	Rainbow trout	Twice yearly	School Holiday Stocking	400	Stock 200 rainbow trout for 2nd and 3rd Term School Holidays.
The Gong (Buninyong)	Rainbow trout	Twice yearly	School Holiday Stocking	400	Potentially a new Family Fishing Water for the school holiday stocking program. 200 rainbow trout for 2nd and 3rd Term School Holidays. Last stocked with 400 rainbow trout in 1996. Fisheries Victoria to investigate public access suitability.
Tooliorook Lake (Lismore)	Brown trout	Annual stocking		3,000	Tooliorook Lake had low water level and brown trout not stocked in 2014.
Tooliorook Lake (Lismore)	Chinook salmon	Annual stocking			A total of 5,000 Chinook salmon stocked in 2013 as part of Chinook salmon stocking trial. Additional stockings of Chinook salmon dependant on success of current stocking and fish availability of Chinook salmon. Next stocking in 2016.
Tooliorook Lake (Lismore)	Rainbow trout	Annual stocking		4,000	Tooliorook Lake had low water level and rainbow trout not stocked in 2014.
Toolondo Reservoir (Toolondo)	Brown trout	Annual stocking		20,000	Water management regime altered from historical practices and there is no guarantee of water security. Toolondo Reservoir is treated as an opportunistic fishery and will be stocked when water security is sufficient for salmonids to grow over 3 to 4 years.
Toolondo Reservoir (Toolondo)	Rainbow trout	Annual stocking		10,000	Water management regime altered from historical practices and there is no guarantee of water security. Toolondo Reservoir is treated as an opportunistic fishery and will be stocked when water security is sufficient for salmonids to grow over 3 to 4 years.
Victoria Lakes (Ballarat)	Rainbow trout	Twice yearly	School Holiday Stocking	800	Stock 400 rainbow trout for 2nd and 3rd Term School Holidays. Stock 200 rainbow trout into both lakes each Term School Holidays.
Wallace Lake (Edenhope)	Brown trout	Annual stocking		1,000	Stock Wallace Lake if water level is suitable. Stock 1,000 brown trout annually. Low water level in Wallace Lake during 2014 not stocked with brown trout.
Wallace Lake (Edenhope)	Rainbow trout	Annual stocking		4,000	Stock Wallace Lake if water level is suitable. Stock 4000 rainbow trout annually. Low water level in Wallace Lake during 2014 not stocked with rainbow trout.

Water	Species	Stocking schedule	Type	Planned for 2014-15:	Comments:
Wallace Lake (Edenhope)	Golden perch				Request to stock golden perch not supported.
Wartook Lake (Halls Gap)	Brown trout	Annual stocking		5,000	Request to stock larger 50 g+ yearling brown trout due to redfin predation in Wartook Lake. Support if possible.
Wartook Lake (Halls Gap)	Rainbow trout	Annual stocking		5,000	Request to stock larger 50 g+ yearling rainbow trout due to redfin predation in Wartook Lake. Support if possible.
Wendouree Lake (Ballarat)	Brown trout	Annual stocking		11,000	Fisheries Victoria will endeavour to assist if suitable sized fish are available for planting prior to the Oceania's Fly Fishing Championships in the designated waters.
Wendouree Lake (Ballarat)	Rainbow trout	Annual stocking		10,000	
Wendouree Lake (Ballarat)	Brown trout	Annual stocking		6,000	Historic stocking of brown trout by the Ballarat Fish Hatchery in conjunction with Fisheries Victoria's trout stocking.
West Barwon Dam (Forrest)	Brown trout				West Barwon Dam is considered to have a self-sustaining wild brown trout population. Not stocked with brown trout.
West Barwon Dam (Forrest)	Rainbow trout	Annual stocking		3,000	West Barwon Dam stocked as part of triploid rainbow trout trial. Annual stocking 3,000 triploid rainbow trout.
Wimmera River (Jeparit to Elmhurst)	Golden perch	Annual stocking		60,000	Stock the Wimmera River with 60,000 golden perch over the next 3 years. This is the 30,000 golden perch annual stocking plus an extra 30,000 golden perch to boost golden perch stocks in Wimmera River on the back of improved water conditions and environmental flows.
Wimmera River (Jeparit to Horsham)	Silver perch	Annual stocking		10,000	Annual stocking of 10,000 silver perch. Stock 5,000 silver perch at Dimboola and Horsham.
Wombat Reservoir (Daylesford)	Brown trout	Annual stocking		1,000	
Wombat Reservoir (Daylesford)	Rainbow trout	Annual stocking		1,000	
Wurdiboluc Reservoir (Winchelsea)	Brown trout	Annual stocking		4,000	



Water	Species	Stocking schedule	Type	Planned for 2014-15:	Comments:
Wurdiboluc Reservoir (Winchelsea)	Rainbow trout	Annual stocking		4,000	
Yarriambiack Creek (Beulah, Brim & Warracknabeal)	Golden perch	Annual stocking		3,000	Stock 1,000 golden perch at Beulah, Brim and Warracknabeal.

## Hume

Water	Species	Stocking schedule	Type	Planned for 2014-15:	Comments:
Allans Flat Dredge Hole (Allans Flat)	Golden perch	Annual stocking		1,000	
Allans Flat Dredge Hole (Allans Flat)	Rainbow trout	Three per year	School Holiday Stocking	1,200	Stock 350 rainbow trout for 2nd and 3rd Term School Holidays plus 500 rainbow trout for Fishing Week Event in October.
Amaroo Lake (Shepparton)	Golden perch	Annual stocking		500	Part of the Kialla Lakes system at Shepparton.
Anderson Lake (Chiltern)	Golden perch	Annual stocking		1,000	
Anderson Lake (Chiltern)	Rainbow trout	Twice yearly	School Holiday Stocking	600	Stock 300 rainbow trout for 1st and 3rd Term School Holidays.
Arboretum Dam (Euroa)	Rainbow trout	Twice yearly	School Holiday Stocking	800	Stock 400 rainbow trout for 2nd and 3rd Term School Holidays.
Banimboola Lake (Dartmouth)	Brown trout	Annual stocking		3,000	Stocking of brown trout not supported by water manager. Stocking on hold pending water manager approval.
Banimboola Lake (Dartmouth)	Rainbow trout	Annual stocking		5,000	Stocking of rainbow trout not supported by water manager. Stocking on hold pending the outcome of future discussions with water manager.
Bartlett Lake (Tatura)	Golden perch	Biennial stocking			Biennial stocking of 500 golden perch next stocking in 2015-16.
Bartlett Lake (Tatura)	Rainbow trout	Twice yearly	School Holiday Stocking	200	Stock 100 rainbow trout for 2nd and 3rd Term School Holidays.
Benalla Lake (Benalla)	Golden perch	Annual stocking		5,000	Request to increase annual stocking of golden perch to 5,000 supported.
Benalla Lake (Benalla)	Murray cod	Annual stocking		5,000	
Boosey Creek (Katamatite)	Golden perch	Annual stocking		9,000	Boosey Creek: stock 2,000 golden perch upstream Katamatite Township; 3,000 golden perch at Katamatite township; 2,000 golden perch downstream of Katamatite township. Reduce Katamatite township back to 2,000 golden perch and reduce stocking at other sites by 50% following

Water	Species	Stocking schedule	Type	Planned for 2014-15:	Comments:
					year. Annual ongoing stockings thereafter at the reduced rate. Incorporate the Tungamah Weir Pool in the Boosey Creek golden perch stocking. 2,000 golden perch to be stocked in Tungamah Weir Pool.
Boosey Creek (Katamatite)	Murray cod	Annual stocking		3,000	Boosey Creek: stock 1,000 Murray cod Upstream of Katamatite Township; 1,000 Murray cod at Katamatite Township and 1,000 Murray cod Downstream of Katamatite Township. Reduce stocking by 50% following year. Annual ongoing thereafter at reduced rate.
Broken Creek (Dip Bridge to Nathalia)	Golden perch	Annual stocking		20,000	Stock golden perch from Dip Bridge to Nathalia. Stock an extra 50 golden perch 30 cm+ (depending on availability) between Chinaman's and Nathalia Weirs for fishing contest.
Broken Creek (Dip Bridge to Nathalia)	Murray cod	Annual stocking		10,000	Stock Murray cod from Dip Bridge to Nathalia.
Broken River (Downstream of Nillahcootie Lake to Gowangardie Weir)	Golden perch	Annual stocking		45,000	Spread golden perch from downstream of Nillahcootie Lake to Gowangardie Weir (Calcein marked).
Broken River (Downstream of Nillahcootie Lake to Gowangardie Weir)	Murray cod	Annual stocking		20,000	Spread Murray cod from downstream of Nillahcootie Lake to Gowangardie Weir (Calcein marked).
Broken River (Downstream of Nillahcootie Lake to Gowangardie Weir)	Brown trout	Annual stocking			Request to stock brown trout. Defer support of stocking request until a survey is done in 2014-15 to assess current fish communities.
Buffalo Lake (Dandongadale)	Brown trout	Annual stocking		1,000	
Buffalo Lake (Dandongadale)	Golden perch	Annual stocking		5,000	
Buffalo Lake (Dandongadale)	Murray cod	Annual stocking		10,000	
Corryong-Jermal Creek	Murray cod	Biennial stocking		2,500	Biennial stocking of 2,500 Murray cod next stocking in 2014-15.

## Hume

Water	Species	Stocking schedule	Type	Planned for 2014-15:	Comments:
Corryong-Nariel Creek (Between Colac Colac Bridge & Nankervis's Bridge)	Brown trout				Request to stock brown trout into Corryong-Nariel Creek from Corryong Angling Club. Defer stocking decision until the findings of the monitoring surveys of the Wild Trout Management Program are reported.
Craigmuir Lake (Mooroopna)	Golden perch	Annual stocking		500	
Cudgewa Creek (Cudgewa)	Murray cod	Biennial stocking		5,000	Biennial stocking of Murray cod next stocking in 2014-15.
Cummins Reserve Lake (Yea)	Golden perch	Annual stocking		250	Stock golden perch and assess stocking success in five years. Cummins Lake not stocked in 2013-14 due to low water level.
Eildon Lake (Bonnie Doon to Jamieson)	Brown trout	Annual stocking		20,000	Future stocking of brown trout to be guided by research.
Eildon Lake (Bonnie Doon to Jamieson)	Golden perch	Annual stocking		50,000	
Eildon Lake (Bonnie Doon to Jamieson)	Murray cod	Annual stocking		30,000	Priority water for annual stocking of Murray cod. Additional Murray cod will be stocked if produced at Snobs Creek (along with additional Murray cod stocked into Eppalock and Hume Lakes). Extra 3,500 Murray cod stocked 2013-14
Eildon Lake	Rainbow trout	Annual stocking			Low returns of rainbow trout to Lake Eildon anglers, remove rainbow trout from stocking list.
Eildon Pondage Weir (Eildon)	Brown trout	Annual stocking		650	Annual stocking of Ex Brood brown trout plus excess 2 year old brown trout for trout festivals/competitions. Dependant on number of Ex Brood stock available.
Eildon Pondage Weir (Eildon)	Rainbow trout	Annual stocking		650	Annual stocking of Ex Brood rainbow trout plus excess 2 year old rainbow trout for trout festivals/competitions. Dependant on number of Ex Brood stock available.
Eildon Pondage Weir (Eildon)	Rainbow trout	Twice yearly	School Holiday Stocking	9,000	Stock 2,000 rainbow trout for 2nd and 3rd Term School Holidays. Spread 5,000 advanced rainbow trout from June to December.
Eldorado Dredge Hole (Eldorado)	Golden perch	Annual stocking		1,000	



Water	Species	Stocking schedule	Type	Planned for 2014-15:	Comments:
Felltimber Creek Wetlands (Wodonga)	Rainbow trout	Three per year	School Holiday Stocking	800	Stock 400 rainbow trout for 1st and 3rd Term School Holidays.
Fosters Dam (Glenrowan)	Rainbow trout	Annual stocking	School Holiday Stocking	200	Stock 200 rainbow trout for 2nd Term School Holidays.
Golf Course Dam (Longwood)	Rainbow trout	Annual stocking	School Holiday Stocking	200	Stock 200 rainbow trout for 3rd Term School Holidays.
Goulburn River (Eildon to Molesworth)	Brown trout	Annual stocking		10,000	Stock brown trout from below the gates at Eildon to Molesworth. 4th year of a 5 year stocking plan.
Goulburn River (Nagambie Lake to Seymour)	Golden perch	Annual stocking		50,000	Stocking assessment research indicates little contribution of stocked golden perch to perch fishery in Goulburn River downstream of Goulburn Weir. Stocking of golden perch in river downstream of Goulburn Weir discontinued. Annual stocking of 50,000 golden perch upstream of Nagambie Lake to Seymour (including Nagambie Lake) to continue.
Goulburn River (Eildon to Molesworth)	Rainbow trout				Request for stocking rainbow trout in Goulburn River not supported.
Goulburn River (Trawool)	Macquarie perch	Annual stocking		6,000	Stocking of Macquarie perch dependant on Macquarie perch numbers produced. Stock Macquarie perch in the Trawool area. 27,500 Macquarie perch stocked in 2013-14. Calcein marked
Goulburn River (Below Goulburn Weir to McCoy's Bridge & Nagambie Lake to Seymour)	Murray cod	Annual stocking		100,000	Stock 50,000 Murray cod below Goulburn Weir to McCoy's Bridge Calcein marked. Stock 50,000 Murray cod upstream of Nagambie Lake to Seymour (including Nagambie Lake).
Goulburn River (Junction with Edwards Creek downstream to Jamieson)	Brown trout	Annual stocking		5,000	Commencing 3 year stocking trial of 5,000 brown trout into Upper Goulburn River between Junction with Edwards Creek downstream to Jamieson. Stocking of brown trout commenced in 2014. Fin Clipped brown trout
Greens Lake (Corop)	Golden perch	Annual stocking		5,000	
Greens Lake (Corop)	Murray cod	Biennial stocking		5,000	Biennial stocking of Murray cod, next stocking 2014-15.

## Hume

Water	Species	Stocking schedule	Type	Planned for 2014-15:	Comments:
Harrietville Tronoh Dredge Hole (Harrietville)	Golden perch	Annual stocking		500	
Harrietville Tronoh Dredge Hole (Harrietville)	Murray cod	Annual stocking		500	
Holland Creek (Upstream of Spring Creek))	Brown trout	Annual stocking		1,000	Stock brown trout above Spring Creek. Request to extend brown trout stocking lower down Holland Creek not supported. Consider 2,000 golden perch in lower reaches of Holland Creek. Translocation authority required for stocking golden perch.
Howqua River (Between Sheeppark Flat & Running Creek)	Brown trout	Annual stocking		5,000	Commencing 3 year stocking trial of 5,000 brown trout in Howqua River between Sheeppark Flat and Junction with Running Creek 2014. Fin Clipped brown trout.
Hume Lake (Tallangatta)	Brown trout	Annual stocking		30,000	
Hume Lake (Tallangatta)	Golden perch	Annual stocking		50,000	Hume Lake has been stocked with 150,000 golden perch for last 10 years to build the golden perch fishery. Current golden perch stocking is to maintain fishery.
Hume Lake (Tallangatta)	Murray cod			65,000	Begin 3 year stocking trial for Murray cod. Cod numbers boosted for next three years. Priority water for Murray cod if additional Murray cod are produced at Snobs Creek (along with additional Murray cod stocked into Eildon and Eppalock Lakes).
Hume Lake (Tallangatta)	Rainbow trout	Annual stocking		30,000	Fisheries Victoria to investigate catch returns of rainbow trout to anglers. Few rainbow trout seen in fishery. Considering rainbow trout numbers reduction.
Lima East Creek					Request to stock Lima East Creek with trout not supported.
Kerferd Lake (Beechworth)	Trout cod	Annual stocking		5,000	
Kialla Lakes (Shepparton)	Golden perch	Annual stocking		1,500	
Kiewa River (Baranduda to Dederang)	Murray cod	Annual stocking		5,000	

Water	Species	Stocking schedule	Type	Planned for 2014-15:	Comments:
King Lake (Rutherglen)	Golden perch	Annual stocking		1,000	
King River (Edi to below William Hovell Lake)	Brown trout	Annual stocking			Request received to stock brown trout. Decision deferred until further information collected after King River surveyed and monitored as part of Wild Trout Management Plan.
Les Stone Park Lake (Wodonga)	Rainbow trout	Twice yearly	School Holiday Stocking	200	Stock 100 rainbow trout for 2nd and 3rd Term School Holidays.
Loch Garry (Bunbartha)	Golden perch	Biennial stocking			Biennial stocking of golden perch next stocking of golden perch 2015-16.
Lowanna Lake (Shepparton)	Golden perch	Annual stocking		500	Lowanna Lake is part of the Kialla Lakes system at Shepparton.
Marysville Lake (Marysville)	Rainbow trout	Twice yearly	School Holiday Stocking	900	Stock 450 rainbow trout for 2nd and 3rd Term School Holidays.
Mitta Mitta River (Hume Lake to Eskdale)	Murray cod	Annual stocking		20,000	Murray cod stocking included in Hume Lake boost. Hume Lake Murray cod to be released in lake and some spread up Mitta Mitta River to Eskdale (Calcein marked).
Moodemere Lake (Rutherglen)	Catfish	Annual stocking			1,400 catfish stocked in February 2014. Annual stocking with stocking numbers dependant on catfish availability.
Moonee Creek					Request to stock Moonee Creek with trout not supported.
Mooroopna Recreation Reserve Lake (Mooroopna)	Rainbow trout	Annual stocking	School Holiday Stocking	100	Stock 100 rainbow trout for 2nd Term School Holidays.
Mount Beauty Pondage (Mount Beauty)	Brown trout	Annual stocking		1,000	
Mount Beauty Pondage (Mount Beauty)	Rainbow trout	Annual stocking		1,500	Stock 500 rainbow trout before Easter 2015, the other 1,000 rainbow trout stocked in October/November.
Nagambie Lake (Nagambie)	Golden perch	Annual stocking			See Goulburn River

Water	Species	Stocking schedule	Type	Planned for 2014-15:	Comments:
Nagambie Lake (Nagambie)	Murray cod	Annual stocking			See Goulburn River
Nillahcootie Lake (Barjarg)	Golden perch	Annual stocking		10,000	
Nillahcootie Lake (Barjarg)	Murray cod	Annual stocking		20,000	
Nine Mile Creek (Wunghnu)	Golden perch	Annual stocking			Request to stock Nine Mile Creek with golden perch not supported. Last stocked with 2,500 golden perch in 2001.
Nine Mile Creek (Wunghnu)	Murray cod	Annual stocking			Request to stock Nine Mile Creek with Murray cod not supported.
Numurkah Lake (Numurkah)	Golden perch	Annual stocking		6,000	Stocking of golden perch in Numurkah Lake reinstated. Last stocked with 5,000 golden perch in 2008.
Numurkah Lake (Numurkah)	Murray cod	Annual stocking			Translocation authority required for stocking of Murray cod. Request not supported
Ovens River (Upstream of Porepunkah to Harrierville)	Brown trout				Stream affected by bushfires and floods. One off recovery stocking of a mix of brown trout yearlings, on-grown and mature fish undertaken in 2014. NECMA requested stocking up stream of Porepunkah.
Ovens River (Upstream of Porepunkah to Harrierville)	Rainbow trout				One off recovery stocking of advanced rainbow trout yearlings requested but not supported. Translocation authority not able to be confirmed in timeline of stocking.
Ovens River (Oxley Flats to Rocky Point)	Macquarie perch	Annual stocking		6,000	Stocking of Macquarie perch from Oxley Flats to Rocky Point. Numbers dependent on Macquarie perch production at Snobs Creek. In 2014 40,500 Macquarie perch stocked into the Ovens River from Oxley Flats to Rocky Point.
Rocky Valley Dam (Falls Creek)	Chinook salmon				1,000 triploid Chinook salmon stocked in 2013 as a Chinook salmon stocking trial. Not stocked in 2014 as no triploid Chinook salmon available. Next stocking of triploid Chinook salmon in 2016. Rocky Valley Dam is the No. 1 priority water for triploid Chinook salmon.
Ryans Creek (Molyullah)	Brown trout	Annual stocking		500	

Water	Species	Stocking schedule	Type	Planned for 2014-15:	Comments:
Sambell Lake (Beechworth)	Trout cod	Annual stocking		5,000	
Sambell Lake (Beechworth)	Golden perch	Annual stocking		5,000	
Sambell Lake (Beechworth)	Rainbow trout	Twice yearly	School Holiday Stocking	2,000	Stock 1,000 rainbow trout for 2nd and 3rd Term School Holidays.
Seven Creeks (Euroa)	Golden perch	Annual stocking		1,000	Stock golden perch in the Euroa township area
Shelley Dam (Shelley)	Rainbow trout		School Holiday Stocking		Request to make this dam a school holiday stocking lake. Request supported pending investigation of water manager and successful application for translocation authority. Fisheries Victoria to assess the suitability of public access.
Stanley Ditch Dam (Stanley)	Golden perch	Annual stocking		500	
Stanley Ditch Dam (Stanley)	Rainbow trout	Twice yearly	School Holiday Stocking	750	Stock 375 rainbow trout for 2nd and 3rd Term School Holidays.
Sumsion Gardens Lake (Wodonga)	Golden perch	Annual stocking		1,000	
Sumsion Gardens Lake (Wodonga)	Rainbow trout	Twice yearly	School Holiday Stocking	500	Stock 250 rainbow trout for 2nd and 3rd Term School Holidays.
Upper Sandy Creek Dam (Upper Sandy Creek)	Brown trout	Annual stocking		1,000	
Upper Sandy Creek Dam (Upper Sandy Creek)	Rainbow trout	Twice yearly	School Holiday Stocking	1,000	Stock 500 rainbow trout for 2nd and 3rd Term School Holidays.
Victoria Lake (Shepparton)	Golden perch	Annual stocking		5,000	
Victoria Lake (Shepparton)	Murray cod	Annual stocking		1,000	



Water	Species	Stocking schedule	Type	Planned for 2014-15:	Comments:
Victoria Lake (Shepparton)	Rainbow trout	Twice yearly	School Holiday Stocking	1,000	Stock 500 rainbow trout for 2nd and 3rd Term School Holidays.
William Hovell Lake (Cheshunt South)	Brown trout	Annual stocking		5,000	Request received to stock William Hovell Lake with brown trout. Last stocked in 1980 with 624 brown trout. Historic information indicates lake has a self-sustaining brown trout population. Survey required to determine brown trout abundance and, therefore, if any stocking of brown trout is required. Macquarie perch stocked in 2011. Translocation authority would be required for brown trout stocking. Request supported pending survey outcomes and successful application for translocation authority to stock brown trout.
William Hovell Lake (Cheshunt South)	Murray cod				Discussion on potential of William Hovell Lake as a mixed fishery for brown trout and Murray cod. No decision made but option left open.
Yarralumla Drive Lake (Wodonga)	Rainbow trout	Twice yearly	School Holiday Stocking	200	Stock 100 rainbow trout for 2nd and 3rd Term School Holidays.

## Loddon Mallee

Water	Species	Stocking schedule	Type	Planned for 2014-15:	Comments:
Avoca River (Charlton to Nattie Yallock)	Golden perch	Annual stocking		20,000	Request to increase golden perch annual stocking to 20,000 supported. Stock golden perch from Charlton to Nattie Yallock
Avoca River (Charlton to Nattie Yallock)	Murray cod	Annual stocking		5,000	Stock Murray cod from Charlton to Nattie Yallock.
Barkers Creek Reservoir (Harcourt)	Brown trout	Annual stocking		5,000	Barkers Creek Reservoir was lowered/draind during 2014 to enable Coliban Water to carry out maintenance works. Annual stocking 5,000 brown trout to recommence when Barkers Creek Reservoir begins to refill. Stock 5,000 with mix of larger brown trout yearlings (70 g+) and additional larger fish, if available, to recreate size structured fishery.
Bealiba Reservoir (Bealiba)	Golden perch	Annual stocking		2,000	
Big Meran Lake (Meering)	Golden perch	Annual stocking		10,000	Big Meran Lake has limited water security and can be drawn down due to environmental water requirements. Not stocked in 2013-14 due to water management issues. Stocking to be done spasmodically in future.
Boga Lake (Lake Boga)	Golden perch	Annual stocking		5,000	Half calcein marked golden perch stocked as part of fishery assessment for fish motel habitat.
Boga Lake (Lake Boga)	Murray cod	Annual stocking		5,000	Half calcein marked golden perch stocked as part of fishery assessment for fish motel habitat.
Cairn Curran Reservoir (Maldon)	Brown trout	Annual stocking		20,000	Keep stocking numbers at 20,000 brown trout annually for a 5 year stocking plan starting in 2015 to 2019.
Cairn Curran Reservoir (Maldon)	Golden perch	Annual stocking		20,000	Keep stocking numbers at 20,000 golden perch annually for a 5 year stocking plan starting in 2014-15 to 2018-19.
Cairn Curran Reservoir (Maldon)	Murray cod	Annual stocking		10,000	Keep stocking numbers at 10,000 Murray cod annually for a 5 year stocking plan starting in 2014-15 to 2018-19.
Cairn Curran Reservoir (Maldon)	Rainbow trout	Annual stocking			Request to stock rainbow trout not supported. Last stocked in 2011 with 5,000 rainbow trout.
Campaspe River (Axedale to Rochester)	Golden perch	Annual stocking		40,000	3 Year Northern Waters Stocking program for extra 40,000 golden perch in addition to normal stocking has been completed. Stocking numbers to revert to annual stocking of 40,000 golden perch (Calcein marked).

Water	Species	Stocking schedule	Type	Planned for 2014-15:	Comments:
Campaspe River (Axedale to Rochester)	Murray cod	Annual stocking		20,000	3 Year Northern Waters Stocking program for extra 20,000 Murray cod in addition to normal stocking has been completed. Revert to annual stocking of 20,000 Murray cod (Calcein marked).
Campaspe River (Kyneton Area)	Golden perch	Annual stocking		5,000	5,000 golden perch stocked in Kyneton area 2013-14
Charm Lake (Lake Charm)	Golden perch	Annual stocking		5,000	
Charm Lake (Lake Charm)	Murray cod	Annual stocking		10,000	
Crusoe Reservoir (Bendigo)	Rainbow trout	Twice yearly		500	Request to develop as a school holiday fishing water was supported. Translocation authority required for rainbow trout stocking. Water manager's approval required. Fisheries Victoria to progress planning on stocking 250 rainbow trout for 2nd and 3rd Term School holidays.
Crusoe Reservoir (Bendigo)	Golden perch	Annual stocking		5,000	
Crusoe Reservoir (Bendigo)	Catfish	Annual stocking			Continue annual stocking of catfish. 500 catfish stocked in February 2014. Stocking dependant on availability of catfish.
Cullulleraine Lake (Cullulleraine)	Murray cod	Biennial stocking		10,000	Biennial stocking of 10,000 Murray cod next stocking in 2014-15
Eppalock Lake (Knowsley)	Golden perch	Annual stocking		120,000	3 Year Northern Waters Stocking program for extra 130,000 golden perch has been completed. Maintain high stocking rates to boost golden perch fishery. Stock 120,000 golden perch annually for next 3 years.
Eppalock Lake (Knowsley)	Murray cod	Annual stocking		50,000	Annual stocking 20,000 Murray cod increased to 50,000 Murray cod for next 3 years. Priority water if additional Murray cod produced at Snobs Creek (along with additional Murray cod stocked into Eildon and Hume Lakes).
Eppalock Lake (Knowsley)	Brown trout	Annual stocking		20,000	Last stocked in 1979 with brown trout. Translocation authority required for brown trout stocking. Request supported pending translocation authority outcome. NCCMA strongly oppose trout stocking in Eppalock Lake.
Expedition Pass Reservoir (Farraday)	Macquarie perch	Annual stocking			Annual stocking 5,000 Macquarie perch. No angler reports and previous survey showed little indication of Macquarie perch survival. Undertake survey and assess results to support/not support continued stocking of

Water	Species	Stocking schedule	Type	Planned for 2014-15:	Comments:
					Macquarie perch. Support to remove from the stocking list.
First Reedy Lake (Kerang)	Golden perch	Annual stocking		2,000	
Foletti Caravan Park Lake (Donald)	Rainbow trout	Twice yearly	School Holiday Stocking	700	Stock 350 rainbow trout for 2nd and 3rd Term School Holidays.
Forest Lake (Kangaroo Flat)	Rainbow trout	Twice yearly	School Holiday Stocking	400	Stock 200 rainbow trout for 2nd and 3rd Term School Holidays
Goldfields Reservoir (Maryborough)	Brown trout	Annual stocking		1,000	Request to increase brown trout annual stocking to 1,000 supported.
Goldfields Reservoir (Maryborough)	Golden perch	Annual stocking		2,000	Request to increase golden perch annual stocking to 2,000 supported.
Goldfields Reservoir (St Arnaud)	Rainbow trout	Annual stocking	School Holiday Stocking	200	Stock 200 rainbow trout for 2nd Term School Holidays. Request to increase numbers not supported.
Green Lake (Sea Lake)	Golden perch				Water leak in Green Lake and water security not known. Stocking of golden perch suspended until rectified. Not stocked in 2013-14.
Gunbower Creek (Patho to Spences Bridge)	Murray cod	Annual stocking		20,000	3 Year Northern Waters Stocking program for extra 60,000 Murray cod on top of existing stocking numbers has been completed. Revert to annual stocking of 20,000 Murray cod (Calcein marked).
Inglewood Reservoir (Inglewood)	Golden perch	Annual stocking		1,000	Stock depending on water level. Not stocked in 2013-14 due to low water level. Annual stocking 2,000 golden perch in 2013-14 were reallocated to Crusoe Reservoir. Reduce to 1,000 golden perch annually when water rels sufficiently for restocking.
Jil Jil Lake (Donald)	Golden perch				Currently has low water level. Remove golden perch stocking from Jil Jil Lake until lake refills sufficiently for restocking.
Jil Jil Lake (Donald)	Rainbow trout				Currently has low water level. Remove rainbow trout stocking from Jil Jil Lake until lake refills sufficiently for restocking.
Kangaroo Lake (Lake Charm)	Golden perch	Annual stocking		25,000	Annual stocking put half fish calcein marked as part of fishery assessment fish motel habitat.

Water	Species	Stocking schedule	Type	Planned for 2014-15:	Comments:
Kangaroo Lake (Lake Charm)	Murray cod	Annual stocking		20,000	Annual stocking put half fish calcein marked as part of fishery assessment fish motel habitat.
Kennington Reservoir (Strathdale)	Rainbow trout	Twice yearly	School Holiday Stocking	1,000	Stock 500 rainbow trout for 2nd and 3rd Term School Holidays.
Kow Swamp (Leitchville)	Golden perch	Annual stocking		20,000	3 Year Northern Waters Stocking program for extra 30,000 golden perch in addition to normal stocking has been completed revert to annual stocking of 20,000 golden perch (Calcein marked).
Laanecoorie Reservoir (Laanecoorie)	Golden perch	Annual stocking		10,000	Request to increase golden perch annual stocking to 10,000 supported.
Laanecoorie Reservoir (Laanecoorie)	Murray cod	Annual stocking		10,000	
Lauriston Reservoir (Lauriston)	Brown trout	Annual stocking		10,000	Request to increase annual brown trout annual stocking to 10,000 supported.
Lauriston Reservoir (Lauriston)	Chinook salmon	Annual stocking			Triploid Chinook salmon trial water. Annual stocking with triploid Chinook salmon when available. 3,000 triploid Chinook salmon stocked in 2013. No yearling triploid Chinook salmon available until 2016.
Little Boort Lake (Boort)	Golden perch	Annual stocking		5,000	
Little Murray River (Swanhill)					Little Murray River last stocked with 8,000 Murray cod in 2012. Has been removed from stocking list.
Loddon River (Below Laanecoorie)	Golden perch	Annual stocking			Request for additional golden perch in Loddon River below Laanecoorie Reservoir not supported. Spread Loddon River golden perch stocking from below Laanecoorie Reservoir to Fernihurst Weir (see below).
Loddon River (Below Laanecoorie)	Murray cod	Annual stocking			Request for additional Murray cod in Loddon River below Laanecoorie Reservoir not supported. Spread Loddon River Murray cod stocking from below Laanecoorie Reservoir to Fernihurst Weir (see below).
Loddon River (Below Laanecoorie Reservoir to Fernihurst Weir)	Golden perch	Annual stocking		50,000	The 3 Year Northern Waters stocking program for extra 50,000 golden perch on top of normal stocking has been completed. Revert to annual stocking of 50,000 golden perch, calcein marked. Spread golden perch stocking below Laanecoorie Reservoir to Fernihurst Weir.



Water	Species	Stocking schedule	Type	Planned for 2014-15:	Comments:
Loddon River (Below Laanecoore Reservoir to Fernihurst Weir)	Murray cod	Annual stocking		35,000	The 3 Year Northern Waters stocking program for extra 35,000 Murray cod on top of normal stocking has been completed. Revert to annual stocking of 35,000 Murray cod, calcein marked. Spread Murray cod stocking below Laanecoore Reservoir to Fernihurst Weir.
Malmsbury Reservoir (Malmsbury)	Brown trout	Annual stocking		4,000	
Serpentine Creek (Duham Ox)	Golden perch	Annual stocking		2,000	
Talbot Reservoir (Evansford)	Brown trout	Annual stocking		1,000	
Talbot Reservoir (Evansford)	Golden perch	Annual stocking			Request for golden perch into Talbot Reservoir not supported.
Talbot Reservoir (Evansford)	Rainbow trout	Annual stocking		500	Request for rainbow trout supported. Last stocked in 2013 with 500 rainbow trout.
Tchum Lake (Birchip)	Golden perch	Biennial stocking		5,000	Biennial stocking of 5,000 golden perch next stocking 2014-15.
Tchum Lake (Birchip)	Rainbow trout	Twice yearly	School Holiday Stocking	1,000	Stock 500 rainbow trout for 2nd and 3rd Term School Holidays.
Teddington Bottom Reservoir (Stuart Mill)	Golden perch	Annual stocking		2,000	Request to increase stock golden perch not supported.
Teddington Bottom Reservoir (Stuart Mill)	Rainbow trout	Annual stocking		2,000	
Teddington Top Reservoir (Stuart Mill)	Brown trout	Annual stocking		2,000	2,000 brown trout not stocked due to low water level/dry in 2014.
Tom Thumb Lake (Eaglehawk)	Rainbow trout	Annual stocking	School Holiday Stocking	200	Stock 200 rainbow trout for 2nd Term School Holidays. Request to increase numbers not supported.
Tullaroop Reservoir (Carisbrook)	Brown trout	Annual stocking		15,000	

Water	Species	Stocking schedule	Type	Planned for 2014-15:	Comments:
Tullaroop Reservoir (Carisbrook)	Rainbow trout	Annual stocking		10,000	
Upper Coliban Reservoir (Kyneton)	Brown trout	Annual stocking		10,000	
Upper Coliban Reservoir (Kyneton)	Rainbow trout	Annual stocking		5,000	
Upper Coliban River (Kyneton)	Macquarie perch			5,000	Upper Coliban Reservoir suggested as future stocking water for Macquarie perch if Expedition Pass Reservoir found to be not suitable in developing Macquarie perch fishery. Current angling regulations allow the take of Macquarie perch from this reservoir and previous stocking of Macquarie perch showed some returns to anglers. Fisheries Victoria to investigate potential. Stocking supported but dependant on Expedition Pass Reservoir survey outcomes and available Macquarie perch.
Victoria Lake (Maryborough)	Golden perch	Annual stocking		2,000	Request to increase golden perch annual stocking to 2,000 supported.
Walkers Lake (Avon Plains)	Golden perch	Annual stocking		5,000	Stock annually with 5,000 golden perch dependant on suitable water level in Walkers Lake.
Watchem Lake (Watchem)	Golden perch	Annual stocking		5,000	
Wooroonook Lake (Charlton)	Murray cod				Request for Murray cod stocking not supported.
Wooroonook Lake (Charlton)	Golden perch			5,000	

## Port Phillip

Water	Species	Stocking schedule	Type	Planned for 2014-15:	Comments:
Albert Park Lake (Albert Park)	Golden perch	Annual stocking		5,000	
Albert Park Lake (Albert Park)	Estuary perch	Annual stocking		10,000	Stocking estuary perch dependant on availability. 10,000 estuary perch stocked in 2013-14.
Albert Park Lake (Albert Park)	Murray cod	Annual stocking		1,000	Request to stock a small number of Murray cod to develop a low key urban Murray cod fishery supported. Translocation approval required for stocking Murray cod. NFA to complete translocation authority initial screening.
Albert Park Lake (Albert Park)	Rainbow trout	Twice yearly	School Holiday Stocking	2,000	Stock 1,000 rainbow trout for 2nd and 3rd Term School Holidays.
Aura Vale Reservoir					Stocking of Aura Vale Reservoir is under investigation for a potential development of a fishery. Translocation authority and water managers' approval required.
Berwick Springs Estate Lake (Berwick)	Rainbow trout	Twice yearly	School Holiday Stocking	1,000	Stock 500 rainbow trout for 2nd and 3rd Term School Holidays. Melbourne Water has issues with algae blooms. Fisheries Victoria to investigate if water on a closed system preventing rainbow trout escaping.
Bittern Reservoir					Linked with Devilbend Reservoir. Bittern Reservoir to be developed for recreational angling in future. Potential estuary perch water or trophy trout fishery. Summer water profile may not suit salmonids
Casey Fields Lake (Cranbourne)	Rainbow trout	Three per year	School Holiday Stocking	1,750	Stock 500 rainbow trout for 2nd and 3rd Term School Holidays plus 750 rainbow trout for Fishing Week Event in October. Increase from 500 to 750 rainbow trout for Fishing Week Event.
Caulfield Racecourse Lake	Rainbow trout	Twice yearly	School Holiday Stocking	600	Stock 300 rainbow trout for 1st and 3rd Term School Holidays.
Cherry Lake (Altona)					Stocking of Cherry Lake considered as a potential development of a fishery but has water quality issues and not supported at this time by Melbourne Water and Fisheries Victoria.
Darlingsford Lake (Melton)	Rainbow trout	Twice yearly	School Holiday Stocking	1,000	Stock 500 rainbow trout for 2nd and 3rd Term School Holidays.
Devilbend Reservoir (Moorooduc)	Brown trout	Annual stocking		5,000	Fishers have issue due to aquatic weed. Fishing platforms currently inadequate to avoid weed. Reassess the location of the platforms for other

Water	Species	Stocking schedule	Type	Planned for 2014-15:	Comments:
					access sites (e.g. wall) and potential for on-water access. Investigate stocking native fish species. Fisheries Victoria to discuss with Parks Victoria.
Devilbend Reservoir (Mooroduc)	Estuary perch	Annual stocking		25,000	Stocking estuary perch dependant on availability. 47,000 estuary perch stocked in 2013-14
Devilbend Reservoir (Mooroduc)	Rainbow trout	Annual stocking		5,000	Fishers have issue due to aquatic weed. Fishing platforms currently inadequate to avoid weed. Reassess the location of the platforms for other access sites (e.g. wall) and potential for on- water access. Investigate stocking native fish species. Fisheries Victoria to discuss with Parks Victoria.
Don Lake (Healesville)	Rainbow trout	Twice yearly	School Holiday Stocking	800	Stock 400 rainbow trout for 2nd and 3rd Term School Holidays.
Emerald Lake (Emerald)	Rainbow trout	Twice yearly	School Holiday Stocking	1,000	Stock 500 rainbow trout for 2nd and 3rd Term School Holidays.
Garfield Lake (Garfield)	Rainbow trout	Twice yearly	School Holiday Stocking	500	Stock 250 rainbow trout for 2nd and 3rd Term School Holidays.
Hanging Rock Lake (Woodend)	Rainbow trout	Twice yearly	School Holiday Stocking	600	Stock 300 rainbow trout for 2nd and 3rd Term School Holidays.
Jack Roper Reserve Lake (Campbellfield)	Rainbow trout	Three per year	School Holiday Stocking	900	Usually receives 300 rainbow trout for 2nd and 3rd Term School Holidays plus 300 rainbow trout for Fishing Week Event in October. Melbourne Water has issues with water quality and stocking put on hold pending more information. Fisheries Victoria to follow up.
Karkarook Lake (Moorabbin)	Estuary perch				Supported a request to stock estuary perch into the Karkarook Lake, subject to availability. NFA to do translocation authority required for estuary perch stocking. No numbers of estuary perch set but numbers dependant on estuary perch availability and requirements of other estuary perch stocking waters.
Karkarook Lake (Moorabbin)	Rainbow trout	Four times per year	School Holiday Stocking	4,000	Stock 1,000 rainbow trout for 1st, 2nd, 3rd Term School Holidays plus 1,000 rainbow trout for Fishing Week Event in October. Fishers enquired about native fish potential for this water. Estuary perch potential species and supported in principle. Future stocking with estuary perch dependant on fish availability and success of perch at other stocked waters. Melbourne Water has raised potential issues with water quality and will supply information to Fisheries Victoria to assess.

Water	Species	Stocking schedule	Type	Planned for 2014-15:	Comments:
Lilydale Lake (Lilydale)	Brown trout	Annual stocking		1,000	
Lilydale Lake (Lilydale)	Estuary perch				Supported a request to stock estuary perch into the Lilydale Lake, subject to availability. NFA to do translocation authority required for estuary perch stocking. No numbers of estuary perch set as numbers dependant on fish availability and requirements of other estuary perch stocking waters.
Lilydale Lake (Lilydale)	Rainbow trout	Twice yearly	School Holiday Stocking	1,600	Stock 800 rainbow trout for 2nd and 3rd Term School Holidays. Provide 800 rainbow trout for angling club disabled anglers fishing event prior to 3rd Term School Holidays. Melbourne Water has raised potential issues with rainbow trout escaping from lake. If outlet has a screen in place and suitable, raise stocking numbers by 250 rainbow trout. Fisheries Victoria to investigate.
Lysterfield Lake					Stocking of Lysterfield Lake is under investigation for a potential development of a fishery
Melton Reservoir (Melton)	Brown trout	Annual stocking			Request to stock Melton Reservoir with brown trout not supported. Melton Reservoir will be stocked with estuary perch pending water manager's approval.
Melton Reservoir (Melton)	Estuary perch	Annual stocking		20,000	Translocation authority received for estuary perch stocking. Stocking will occur subject to water manager's approval.
National Aquatic Centre	Golden perch				Stocking of National Aquatic Centre is under investigation for a potential development of a fishery.
Navan Park Lake (Melton)	Rainbow trout	Three per year	School Holiday Stocking	900	Stock 300 rainbow trout for 2nd and 3rd Term School Holidays plus 300 rainbow trout for Fishing Week Event in October.
Nursery Reservoir (Macedon)	Brown trout	Annual stocking		500	
Nursery Reservoir (Macedon)	Rainbow trout	Annual stocking		500	
Pakenham Lake (Pakenham)	Rainbow trout	Twice yearly	School Holiday Stocking	1,000	Stock 500 rainbow trout for 2nd and 3rd Term School Holidays.
Ringwood Lake (Ringwood)	Golden perch				Request to stock golden perch into Ringwood Lake not supported.

Water	Species	Stocking schedule	Type	Planned for 2014-15:	Comments:
Rowville Lakes (Rowville)	Rainbow trout	Three per year	School Holiday Stocking	1,300	Stock 400 rainbow trout for 2nd and 3rd Term School Holidays in Sutton Lake plus 200 rainbow trout for Fishing Week Event. Hill Lake; 150 rainbow trout for 2nd and 3rd Term School Holidays. Melbourne Water advise Hill Lake is subject to periodic toxic blue green algae/water quality issues.
Roxburgh Park Lakes (Roxburg Park)	Rainbow trout	Twice yearly	School Holiday Stocking	500	Stock 250 rainbow trout for 2nd and 3rd Term School Holidays.
Spavan Lake (Sunbury)	Rainbow trout	Twice yearly	School Holiday Stocking	800	Stock 400 rainbow trout for 2nd and 3rd Term School Holidays. Melbourne Water has concerns regarding rainbow trout escaping. Fisheries Victoria to investigate water security.
Stoney Creek Reservoir(s) (Durdidwarrah)					Stocking of Stoney Creek Reservoir(s) is under investigation for a potential development of a fishery
Werribee River (Downstream of Melton Weir)	Estuary perch	Annual stocking		10,000	Translocation authority received for estuary perch stocking. Stocking to proceed pending water manager's approval.
Yarrambat Lake (Yarrambat)	Rainbow trout	Three per year	School Holiday Stocking	2,000	Stock 600 rainbow trout for 2nd and 3rd Term School Holidays plus 400 rainbow trout for Fishing Week Event in May and 400 rainbow trout for Fishing Week Event in October.



## Appendix 2 – Stocking Submission Check list

The following is a check list of information that you could include in a submission to the stocking program. These suggestions are not mandatory but will assist in the assessment of any proposals if included and addressed. Proposals can be discussed by contacting John Douglas, Fisheries Manager, Fisheries Victoria, on 03 5770 8045, or with your local Fisheries Officer.

Name of Water:	<input type="checkbox"/>
Fish Species:	<input type="checkbox"/>
Suggested change:	<input type="checkbox"/>
Justification for the suggestion: Why is it needed? What is the expected outcome?	<input type="checkbox"/>
Your name and/or organisation:	<input type="checkbox"/>
Affiliation with angling club(s) (if appropriate):	<input type="checkbox"/>
Have you discussed the suggestion with Fisheries Victoria an angling club or association?	<input type="checkbox"/>
Have you checked the suggestion against Fisheries Victoria's stocking policy criteria?	<input type="checkbox"/>
Will the suggested change:	
Maximise the returns to recreational anglers;	<input type="checkbox"/>
Create public value;	<input type="checkbox"/>
Enhance and support natural recruitment;	<input type="checkbox"/>
Be consistent with the translocation protocols and guidelines;	<input type="checkbox"/>
Provide for equitable access for a range of stakeholders;	<input type="checkbox"/>
Satisfy cost-benefit analysis; and	<input type="checkbox"/>
Consider long-term sustainable management strategies.	<input type="checkbox"/>
Are suitable receiving waters for the species to be stocked?	<input type="checkbox"/>
Is there evidence that self-sustaining populations do not exist or that they should be augmented for recreational fishing purposes?	<input type="checkbox"/>





Customer Service Centre **136 186**

[www.depi.vic.gov.au](http://www.depi.vic.gov.au)