

Top tips

Bream can be caught throughout the year with winter and spring being particularly good times. They feed most actively around high tide and the first few hours of the run-out tide, especially if this occurs in the morning or evening.

Baits should be alive or as fresh as possible. Soft plastics and small bibbed lures are proven bream catchers.



Fish by the rules

It's important to know the rules that apply to fishing. These include bag limits and minimum size limits for different types of fish. A bag limit is how many fish you are allowed to keep in one day. A minimum size limit is how big a fish needs to be in order for you to keep it. There are also closed seasons for some types of fish.

To learn more pick up a copy of the free Victorian Recreational Fishing Guide from your tackle outlet, DPI office or visit www.dpi.vic.gov.au/fishing



Go Fishing in Victoria

There are many other types of fish to go fishing for once you have caught a bream.

For information on other species or other places to fish visit: www.dpi.vic.gov.au/gofishing



©The State of Victoria, Department of Primary Industries 2010
ISBN 978-1-74199-915-0

Authorised by the Victorian Government, 1 Spring Street Melbourne

This publication may be of assistance to you but the State of Victoria and its employees do not guarantee that the publication is without flaw or is wholly appropriate for your particular purposes and therefore disclaims all liability for any error, loss or other consequence which may arise from you relying on any information in this publication.

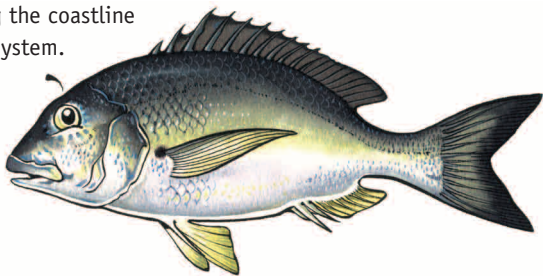
For more information about DPI visit the website at www.dpi.vic.gov.au or call the Customer Service Centre on 136 186.

Let's Go Fishing for Bream



What are they?

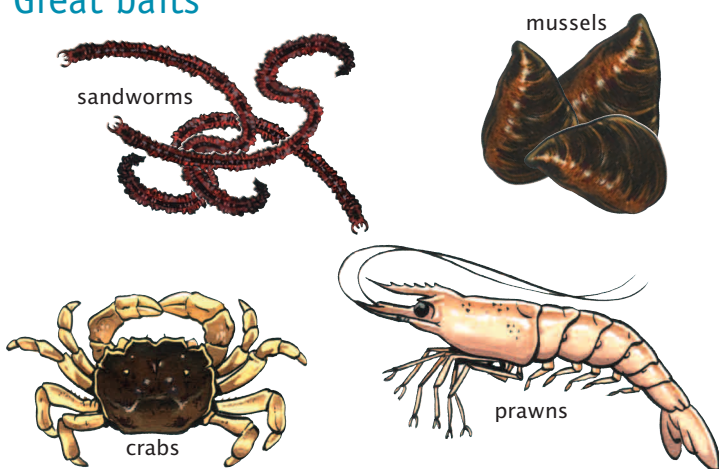
Bream are found in estuaries throughout Victoria. There are two species. Black bream are found throughout the state and are darker in colour. Yellow-fin bream are found east of Wilsons Promontory and are more silvery. Bream are known to travel long distances, and can leave one estuary, swim along the coastline and enter another system.



Getting geared up



Great baits



Select a spot

Bream can be found in most estuaries throughout Victoria. Even really small creeks that are tidal will contain bream.

Hot spots

Hopkins River
Werribee River
Yarra River
Patterson River
Tambo River
Mitchell River
Nicholson River
Gippsland Lakes
Mallacoota

