

Top tips

Summer and autumn are the best times of the year. Plan your trip so that you fish around high tide and during the first two hours of the run-out tide.

A good technique is to wind in very slowly and drag the bait along the bottom. If using squid for bait use small thin strips and tenderise it by hitting it with a blunt object.



Fish by the rules

It's important to know the rules that apply to fishing. These include bag limits and minimum size limits for different types of fish. A bag limit is how many fish you are allowed to keep in one day. A minimum size limit is how big a fish needs to be in order for you to keep it. There are also closed seasons for some types of fish.

To learn more pick up a copy of the free Victorian Recreational Fishing Guide from your tackle outlet, DPI office or visit www.dpi.vic.gov.au/fishing



Go Fishing in Victoria

There are many other types of fish to go fishing for once you have caught a King George whiting.

For information on other species or other places to fish visit:

www.dpi.vic.gov.au/gofishing



©The State of Victoria, Department of Primary Industries 2010
ISBN 978-1-74199-915-0

Authorised by the Victorian Government, 1 Spring Street Melbourne

This publication may be of assistance to you but the State of Victoria and its employees do not guarantee that the publication is without flaw or is wholly appropriate for your particular purposes and therefore disclaims all liability for any error, loss or other consequence which may arise from you relying on any information in this publication.

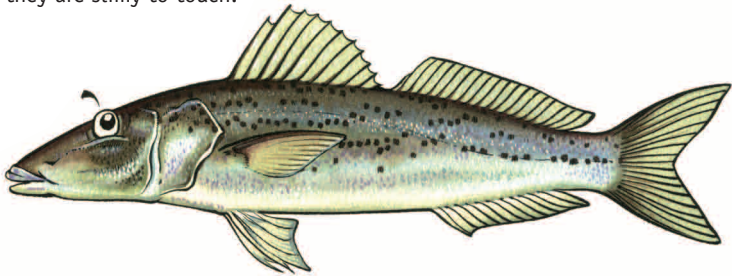
For more information about DPI visit the website at www.dpi.vic.gov.au or call the Customer Service Centre on 136 186.

Let's Go Fishing for King George whiting

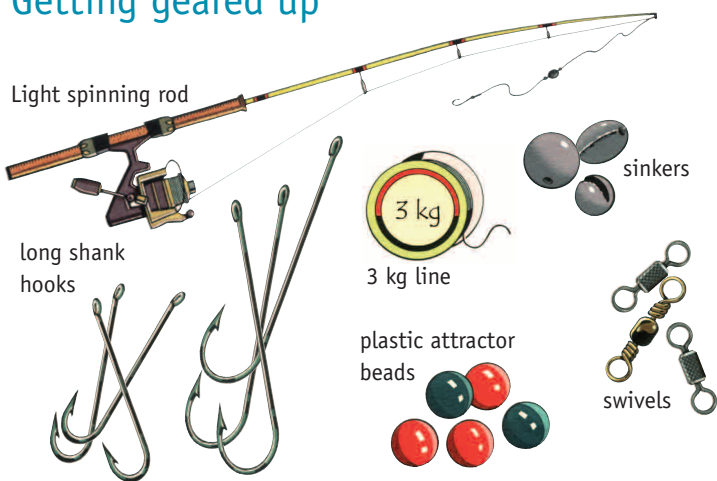


What are they?

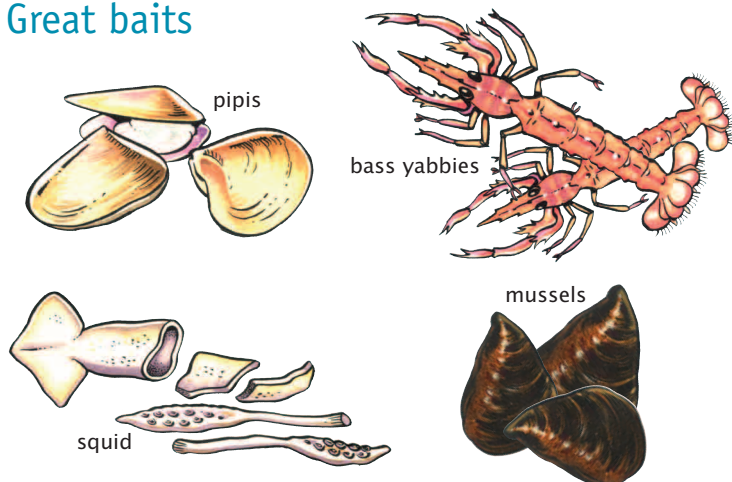
King George whiting are found in estuaries and inshore coastal waters throughout Victoria. They have a long slender body and are coloured silver and brown with small black spots. The mouth is quite small and they are slimy to touch.



Getting geared up



Great baits



Select a spot

King George whiting can be found in coastal waters and estuaries throughout Victoria.

Hot spots

- Western Port
- Port Phillip Bay
- Anderson Inlet
- Corner Inlet
- Shallow Inlet
- Port Albert
- Portland

