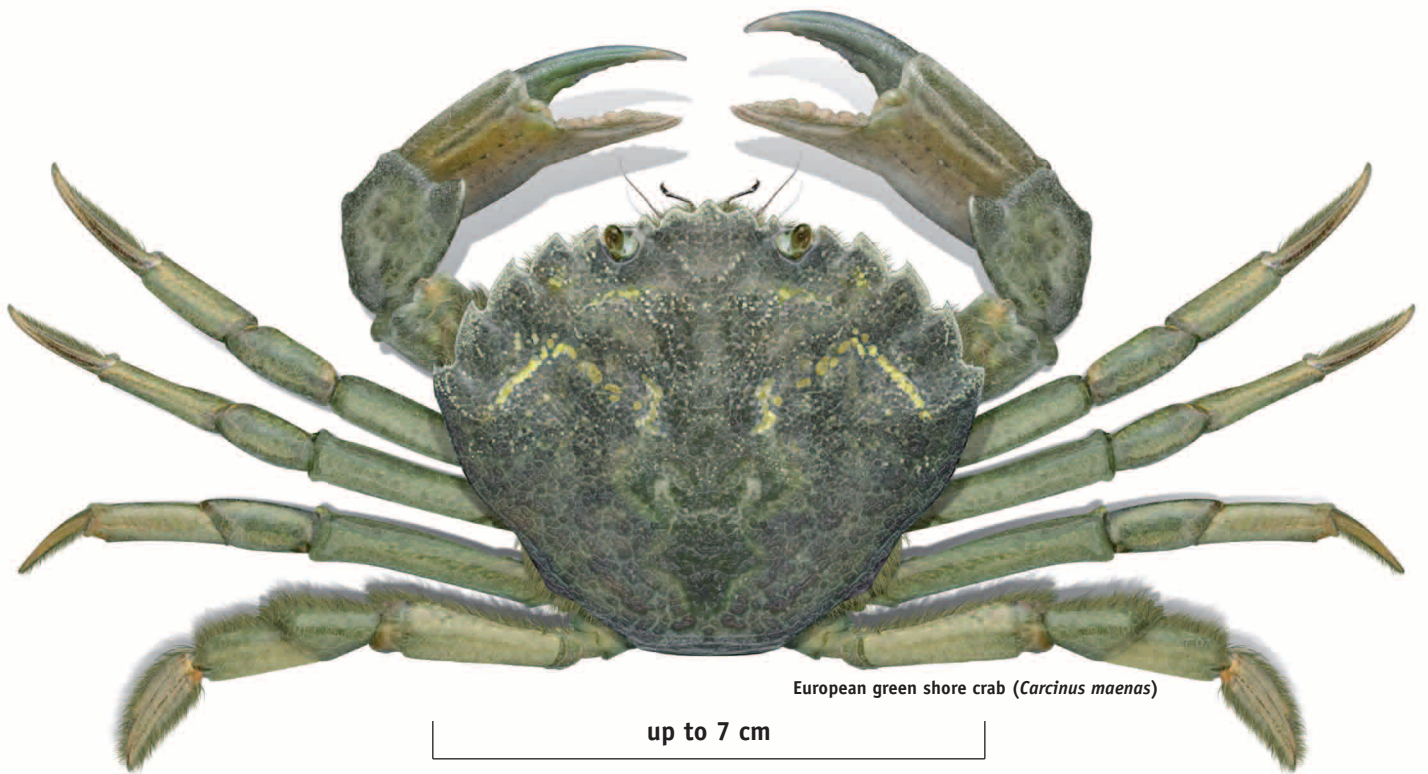


Reduce the spread of European green shore crab



To help prevent the spread of this invasive crab, Victoria has **new regulations**:

- recreational anglers must not use European green shore crabs as **live** bait or return live unused crabs to the water
- European green shore crabs can now be taken in unlimited numbers everywhere other than the intertidal zone of Port Phillip Bay.

Identification

Key features:

- 5 spines on each side of eyes
- Last pair of legs sharp & slightly flattened at tips - no swimming paddles
- Smooth green/brown shell with pale orange underside
- Shell up to 7 cm wide

Distribution, habitat & impacts

In Victoria, European green shore crabs have been found in Gippsland, Port Phillip Bay and west to Apollo Bay. It is most often seen in the intertidal zone (mud and rocks) and subtidally amongst seagrass.

The European green shore crab is an invasive species which competes with, and predated upon, native species.

Don't confuse your crabs

There are several species of native crab that could be confused with European green shore crab.

The current daily catch limit of 30 crabs or 1 litre still applies to all native crabs including those identified below.

All species of crabs, including European green shore crab, must **not** be taken from the intertidal zone of Port Phillip Bay.

The Department of Sustainability and Environment (DSE) have lead responsibility for managing aquatic pests in Victoria. The Department of Primary Industries, through Fisheries Victoria, supports DSE where recreational or commercial fisheries may be affected.

Sand crab (*Ovalipes australiensis*)

Features:

- purple spot towards rear
- swimming paddles on last set of legs
- pale grey shell, up to 10 cm wide



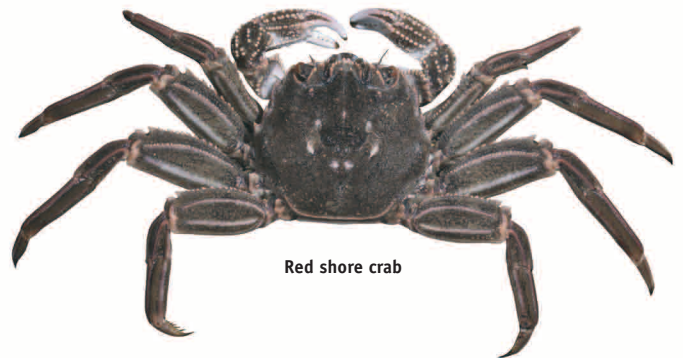
Sand crab

Red shore crab (*Plagusia chabrus*)

also known as Red bait crab or Red rock crab

Features:

- distinctive dark red/brown
- pale lines on walking legs
- dense coat of short hairs on legs
- shell up to 7 cm wide

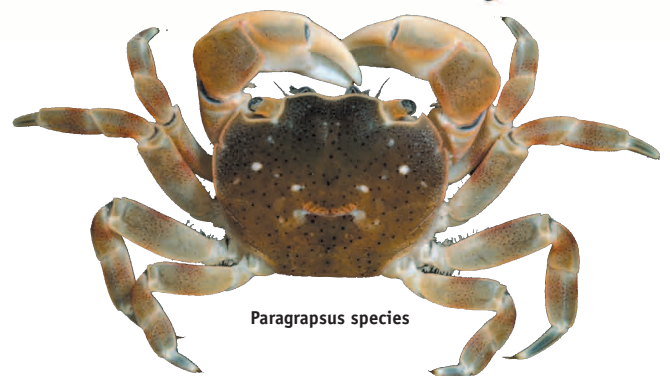


Red shore crab

Paragrapsus species

Features:

- 3 spines on each side of eyes
- first walking legs have felt patch on inner side
- yellow/brown shell with dark red spots
- shell up to 4.5 cm wide



Paragrapsus species

For more information visit www.dpi.vic.gov.au/fisheries

If you would like to receive this information/publication in an accessible format (such as large print or audio) please call the Customer Service Centre on 136 186, TTY 1800 122 969, or email customer.service@dpi.vic.gov.au.

Published by the Department of Primary Industries Fisheries Victoria, July 2010.

© The State of Victoria 2010.

This publication is copyright. No part may be reproduced by any process except in accordance with the provisions of the *Copyright Act 1968*.

Main illustration - I&I NSW, Paragrapsus photo - Michael Marmach, Museum Victoria

Authorised by the Department of Primary Industries, 1 Spring Street, Melbourne 3000.
ISBN 978-1-74264-339-7 (print)

Disclaimer

This publication may be of assistance to you but the State of Victoria and its employees do not guarantee that the publication is without flaw of any kind or is wholly appropriate for your particular purposes and therefore disclaims all liability for any error, loss or other consequence which may arise from you relying on any information in this publication.

For more information about DPI go to www.dpi.vic.gov.au or phone the Customer Service Centre on 136 186.