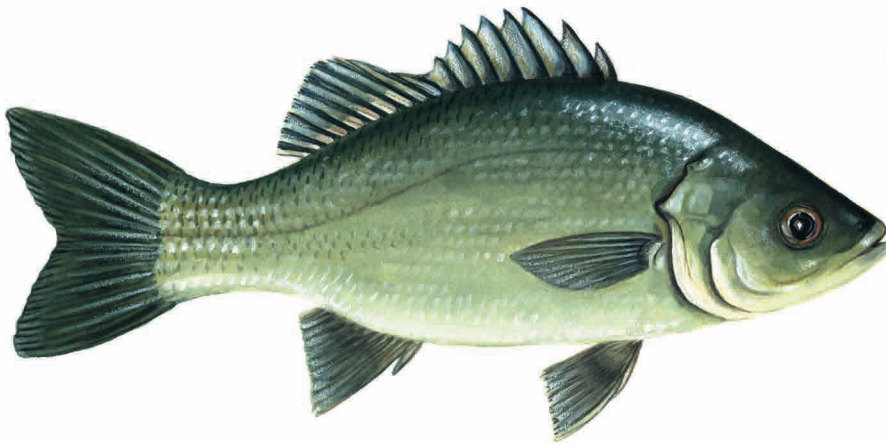


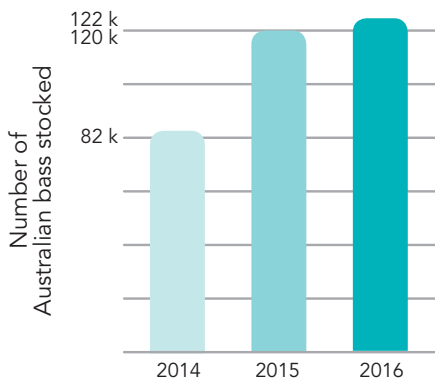
Stocking Australian bass



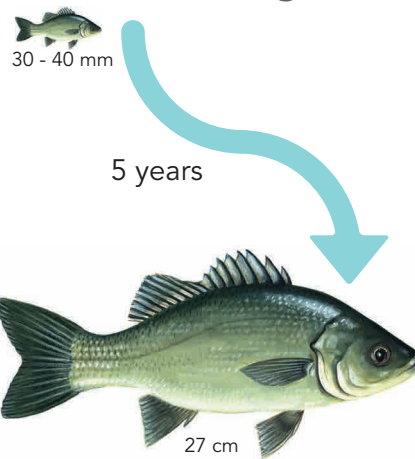
Where

1. Lake Bullen Merri
2. Blue Rock Dam
3. Lake Glenmaggie
4. Snowy River
5. Nicholson River

How many



How big



When to catch

January	February	March
April	May	June
July	August	September
October	November	December

September to May



Habitat

Victorian coastal rivers and lakes. They appear to be much more tolerant of freshwater than estuary perch and moves further upstream.

How



More for you to catch!