

Top tips

Flathead are more active during the warmer months when they move into shallow waters.

Sandy areas with weed beds are good places to try. They feed by ambush, so slowly moving the bait along the bottom will often tempt them to bite. Doing the same with a soft plastic is also very effective.

Handle them carefully to avoid getting pricked from spikes just behind their head.



Fish by the rules

It's important to know the rules that apply to fishing. These include bag limits and minimum size limits for different types of fish. A bag limit is how many fish you are allowed to keep in one day. A minimum size limit is how big a fish needs to be in order for you to keep it. There are also closed seasons for some types of fish.

To learn more pick up a copy of the free Victorian Recreational Fishing Guide from your tackle outlet, DPI office or visit www.dpi.vic.gov.au/fishing



Go Fishing in Victoria

There are many other types of fish to go fishing for once you have caught a flathead.

For information on other species or other places to fish visit:
www.dpi.vic.gov.au/gofishing



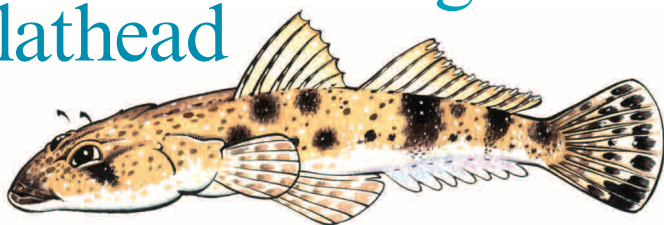
©The State of Victoria, Department of Primary Industries 2010
ISBN 978-1-74199-915-0

Authorised by the Victorian Government, 1 Spring Street Melbourne

This publication may be of assistance to you but the State of Victoria and its employees do not guarantee that the publication is without flaw or is wholly appropriate for your particular purposes and therefore disclaims all liability for any error, loss or other consequence which may arise from you relying on any information in this publication.

For more information about DPI visit the website at www.dpi.vic.gov.au or call the Customer Service Centre on 136 186.

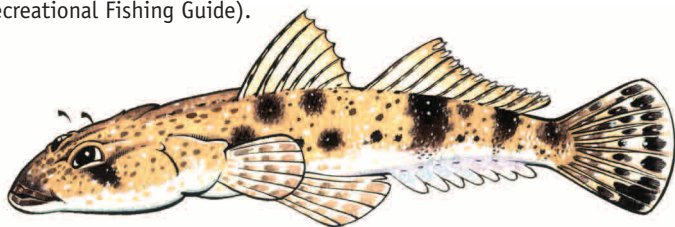
Let's Go Fishing for Flathead



What are they?

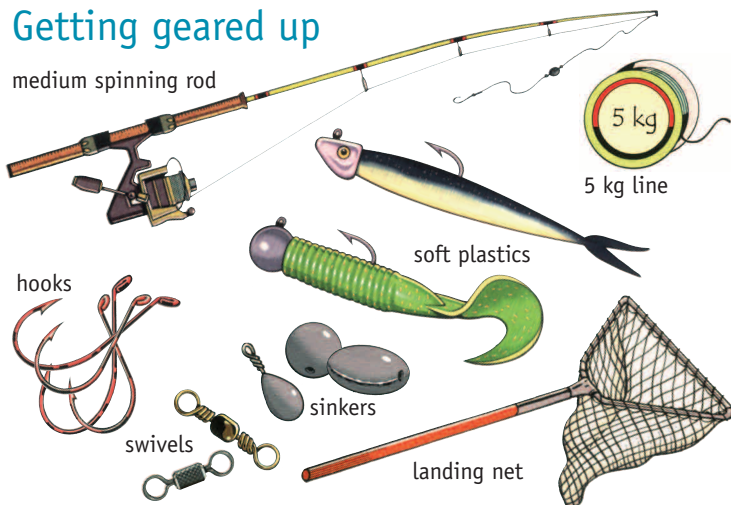
Flathead are found in the ocean as well as in bays and estuaries. They are easily recognised by their large flattened head and long tapering body. There are several different species that can be caught in Victorian waters.

Different size and bag limits apply to dusky flathead compared to other flathead species so learn to tell them apart (refer to the Victorian Recreational Fishing Guide).

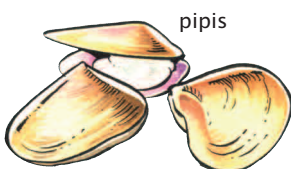
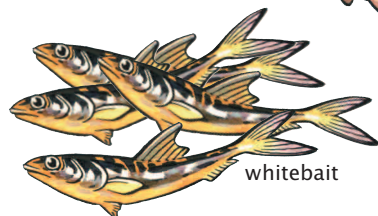
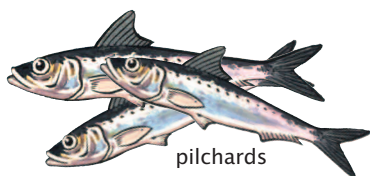
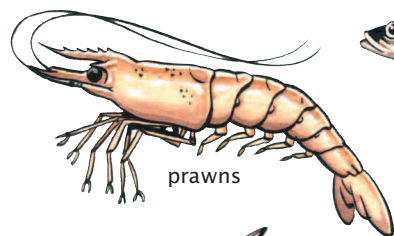


Getting geared up

medium spinning rod



Great baits



Select a spot

Flathead are a very common throughout Victoria and you will have a good chance of catching one from most piers and jetties. They can be found in both shallow and deep water.

Hot spots

Port Phillip Bay
Western Port
Port Albert
Gippsland Lakes
Mallacoota

