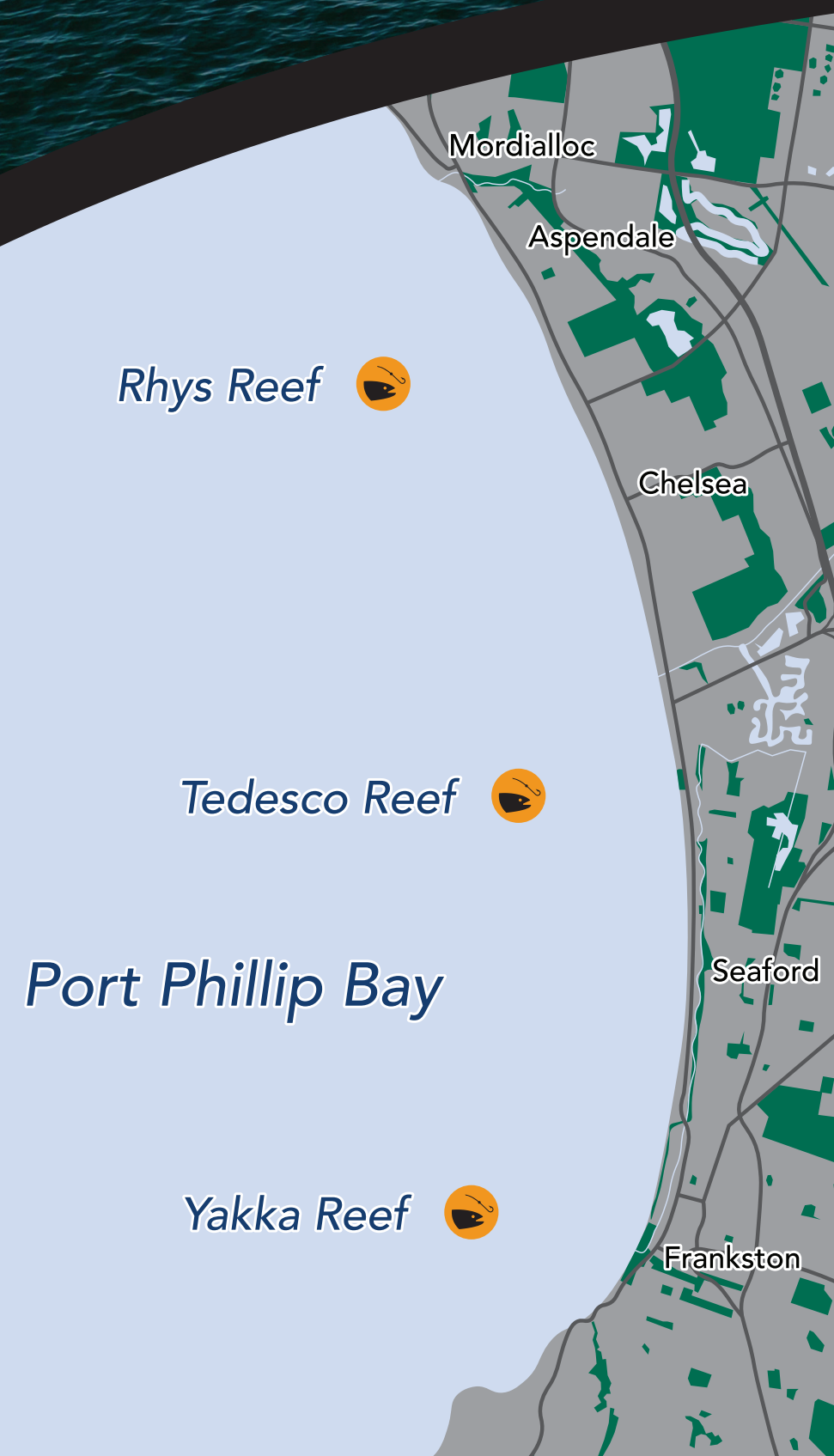


# Rhys Reef



In 2009, the Victorian Fisheries Authority (VFA) installed three reefs in Port Phillip Bay to provide fish habitat and enhance recreational fishing.

The three reefs were deployed in a water depth of 11 metres, approximately 2 kilometres out from Aspendale, Seaford and Frankston.

Since their installation, the reefs have provided excellent fish habitat and fishing for recreational fishers for species such as snapper, King George Whiting and calamari.

For one young recreational fisher, Rhys Gillard, 'Rec Reef' (the reef closest to Aspendale) was a favourite spot to fish from his kayak. He spent many happy hours fishing the reef with his brother and friends.

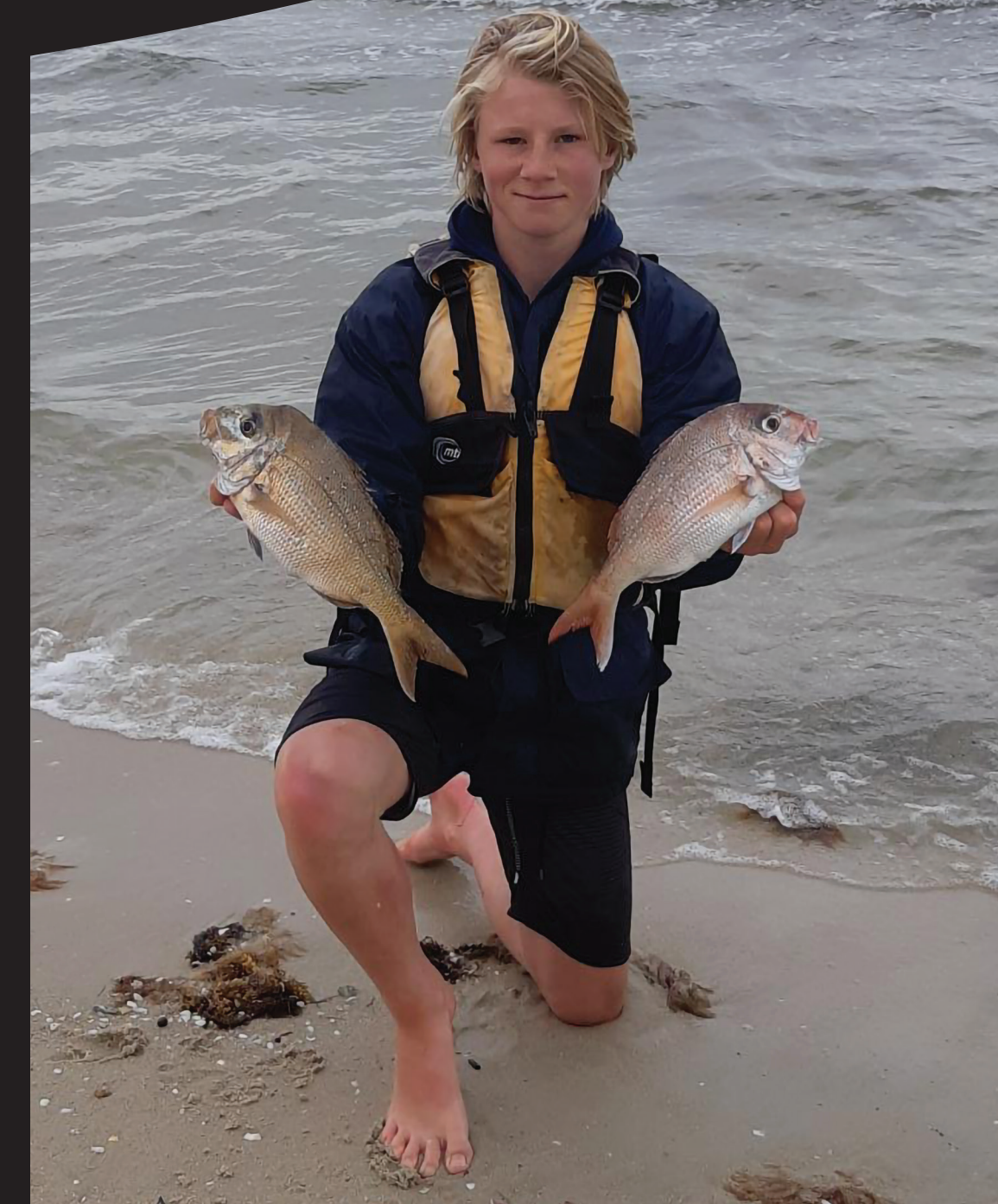
Sadly, in May 2021, Rhys unexpectedly died from a sudden cardiac arrest (aged 17).

In April 2022, Rhys' ashes were spread over the Reef by his family and friends, laying him to rest in this special spot.

In April 2023, 'Rec Reef' was renamed 'Rhys Reef' in his honour.

Rhys was a great friend, brother and son. He had strong ties to his community and was especially passionate about fishing and maintaining a healthy marine environment. He is described as having displayed all the qualities required to be a good fisherman - patient, observant, determined, adventurous and respectful.

**Please look after Rhys Reef.**



To read more about Rhys' story visit: <https://www.enducd.org/rhys-gillard>

To read more about the Recreational Fishing Reefs visit: <https://vfa.vic.gov.au/recreational-fishing/fishing-locations/recreational-fishing-reefs>

Rhys' story:



Recreational Fishing Reefs:

