

Top tips

There is a closed season for Murray cod between 1 September and 30 November inclusive. If you catch a Murray cod during this period you must return it to the water as quickly and carefully as possible.

The summer time is a good time to fish for them, especially in the evenings. Cast your bait in close to snags. Bibbed lures and spinnerbaits are very productive.



Fish by the rules

It's important to know the rules that apply to fishing. These include bag limits and minimum size limits for different types of fish. A bag limit is how many fish you are allowed to keep in one day. A minimum size limit is how big a fish needs to be in order for you to keep it. There are also closed seasons for some types of fish.

To learn more pick up a copy of the free Victorian Recreational Fishing Guide from your tackle outlet, DPI office or visit www.dpi.vic.gov.au/fishing



Go Fishing in Victoria

There are many other types of fish to go fishing for once you have caught a Murray cod.

For information on other species or other places to fish visit:
www.dpi.vic.gov.au/gofishing



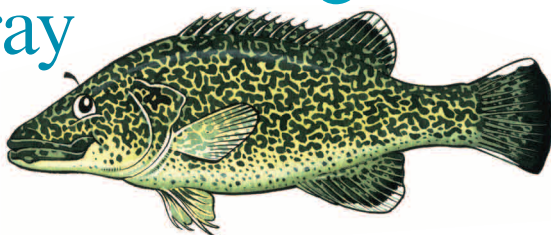
©The State of Victoria, Department of Primary Industries 2010
ISBN 978-1-74199-915-0

Authorised by the Victorian Government, 1 Spring Street Melbourne

This publication may be of assistance to you but the State of Victoria and its employees do not guarantee that the publication is without flaw or is wholly appropriate for your particular purposes and therefore disclaims all liability for any error, loss or other consequence which may arise from you relying on any information in this publication.

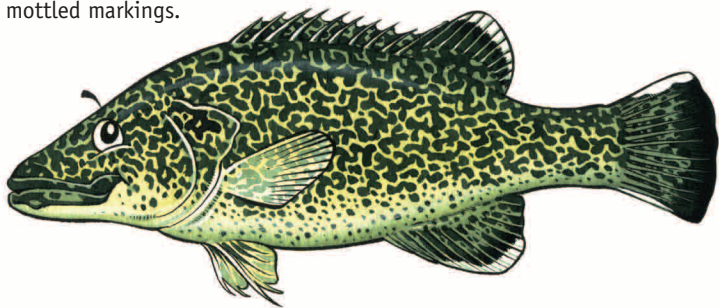
For more information about DPI visit the website at www.dpi.vic.gov.au or call the Customer Service Centre on 136 186.

Let's Go Fishing for Murray cod

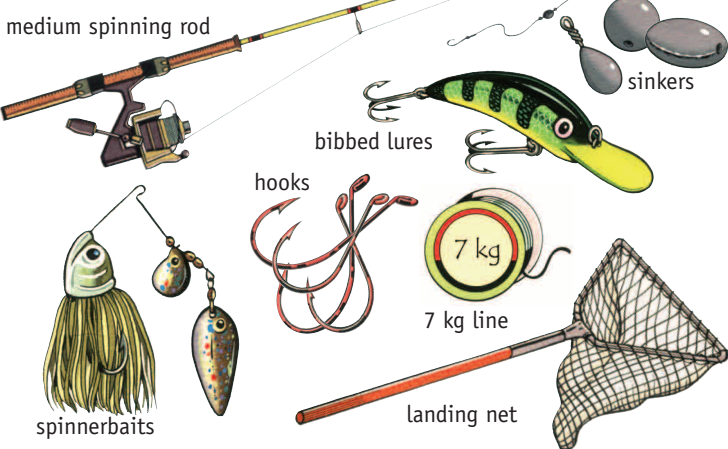


What are they?

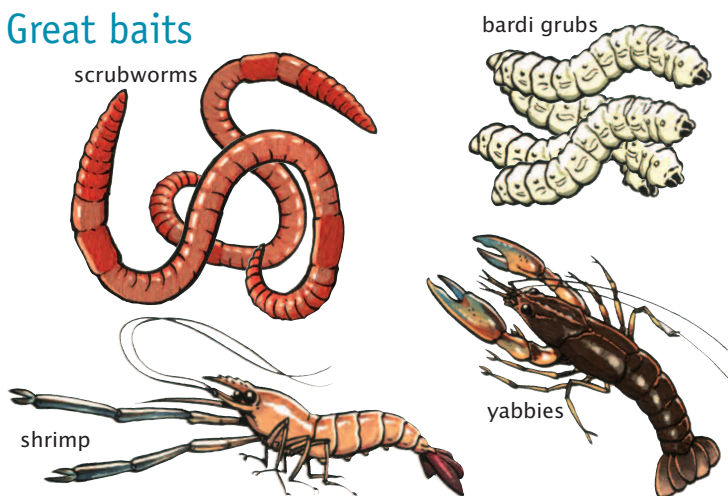
Murray cod are a native freshwater fish found throughout the northern half of Victoria. They are a very large species of fish that can grow to over 40 kg. You can identify them by their greenish colouring and creamy mottled markings.



Getting geared up



Great baits



Select a spot

Many of the rivers and lakes in the northern part of Victoria contain Murray cod.

Hot spots

- Goulburn River (lower)
- Kiewa River (lower)
- Ovens River (lower)
- Lake Eildon
- Lake Hume
- Broken Creek
- Loddon River
- Campaspe River

