

Item 4. Monitoring Program Summary 2023/24 Season



Monitoring Program – Eastern Zone

Data source	No. days	No. vessels	No. potlifts	No. Lobsters
On-board observer	12	5	327	191
Fixed site	16	3	601	340
Voluntary Log	59	2	160	111
Total				642

- Target = \approx 2,500 length measurements
- Observer coverage restricted to Queenscliff region
- Fixed site survey - all 3 fixed sites surveyed
- Improve data quality
 - Increase vol log participation (10% of pot lifts; 800 lengths)

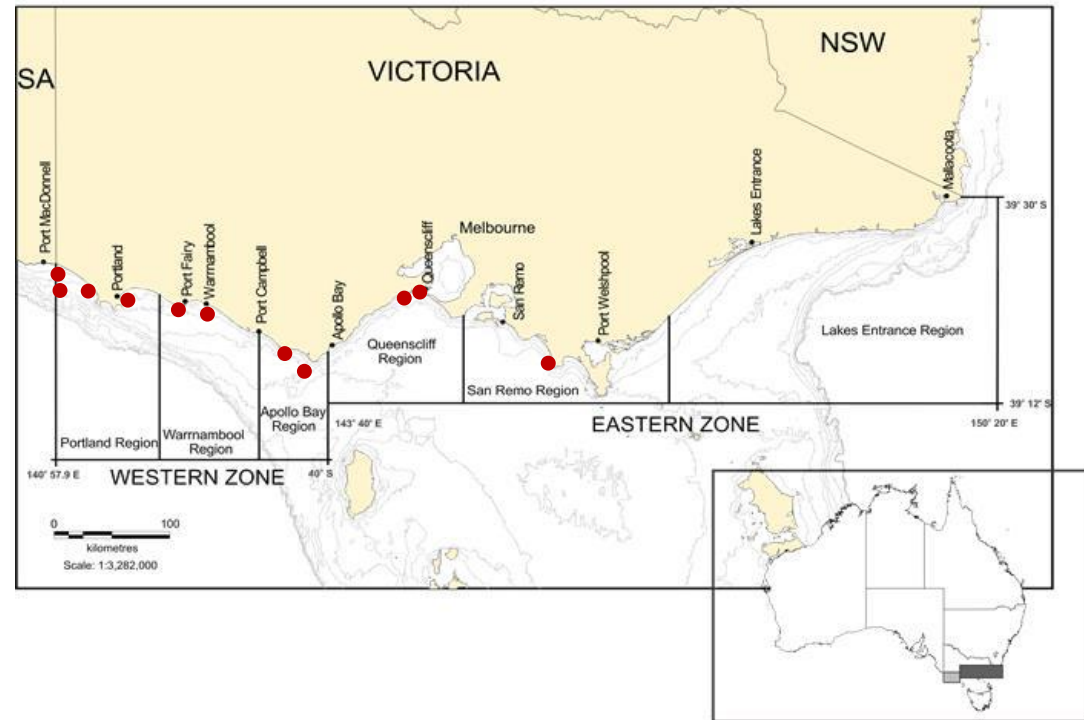
Monitoring Program – Western Zone

Data source	No. days	No. vessels	No. potlifts	No. Lobsters
On-board observer	15	4	1,081	1,878
Fixed site	24	6	1,204	3,530
Voluntary Log	49	2	139	335
Total				5,743

- Target = 5,000 length measurements
- Observer coverage mostly Warrnambool region
- Surveyed 6 of 8 fixed sites
- Improve data quality
 - Increase vol log participation

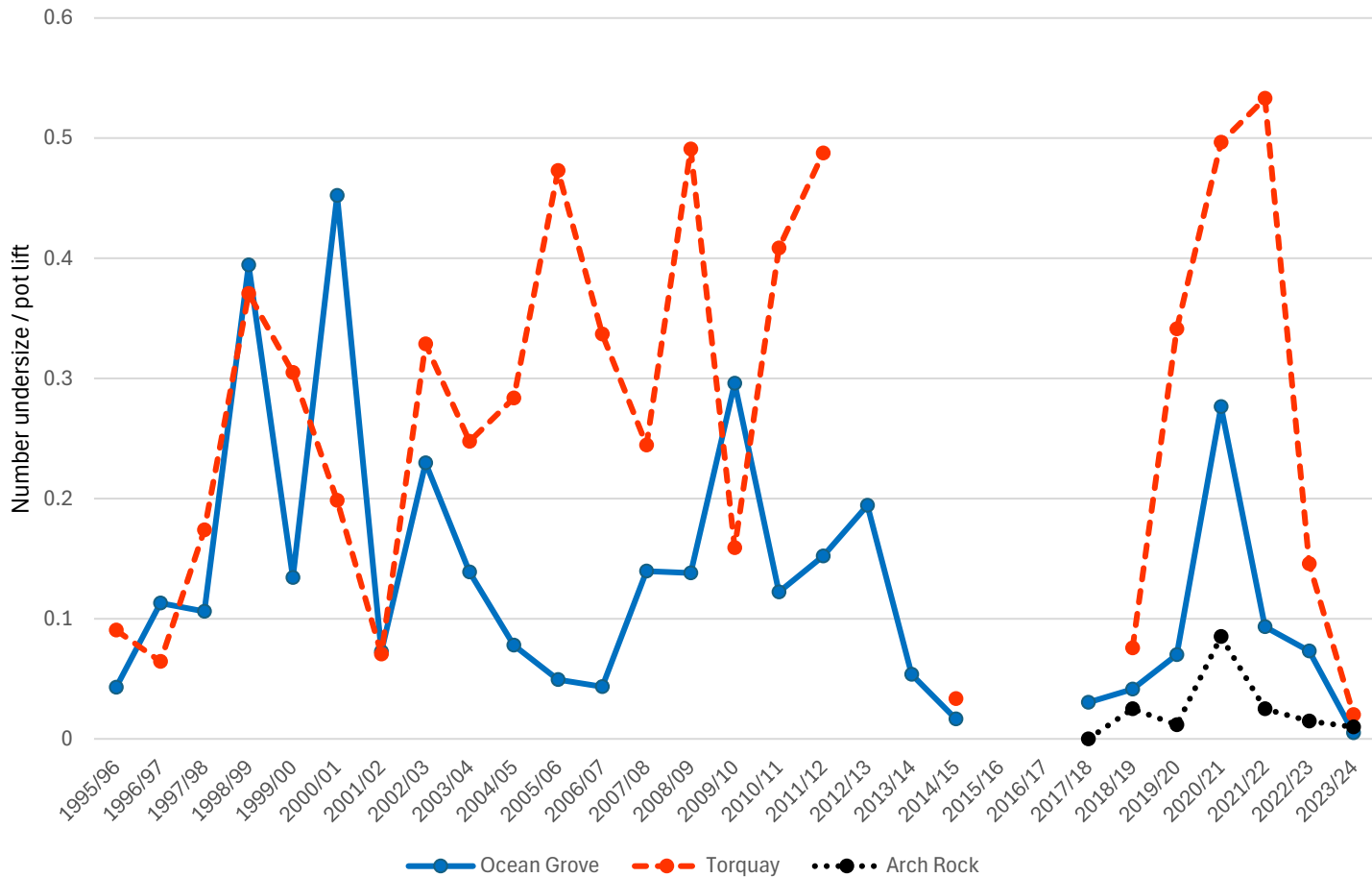
Fixed site surveys

- WZ since 2002
 - 8 sites
 - Escape gaps closed
- EZ since 1996
 - 3 sites
 - Escape gaps closed (50% pots)



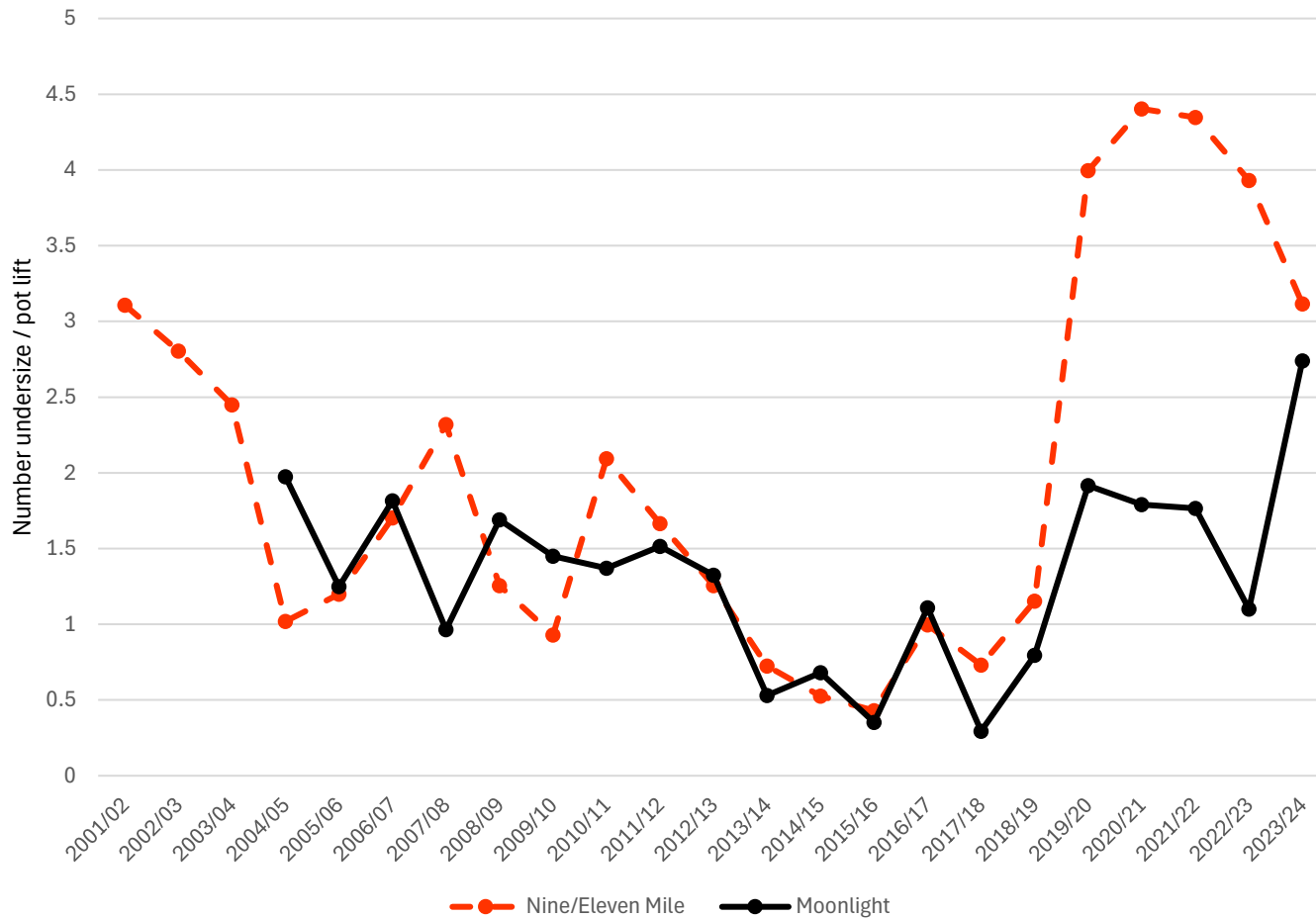
Fixed Site Surveys - EZ

Queenscliff & San Remo Regions

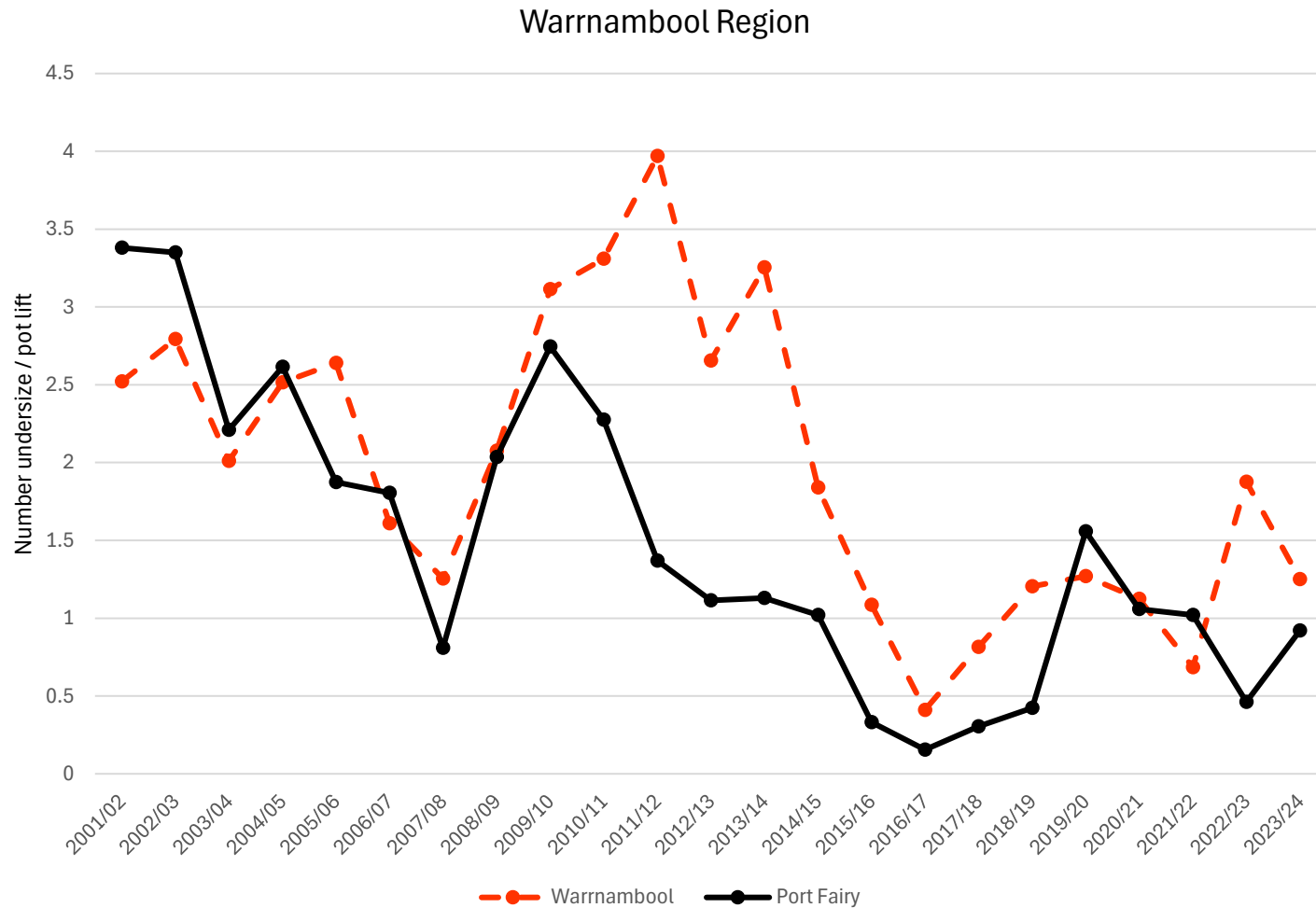


Fixed Site Surveys - WZ

Apollo Bay Region

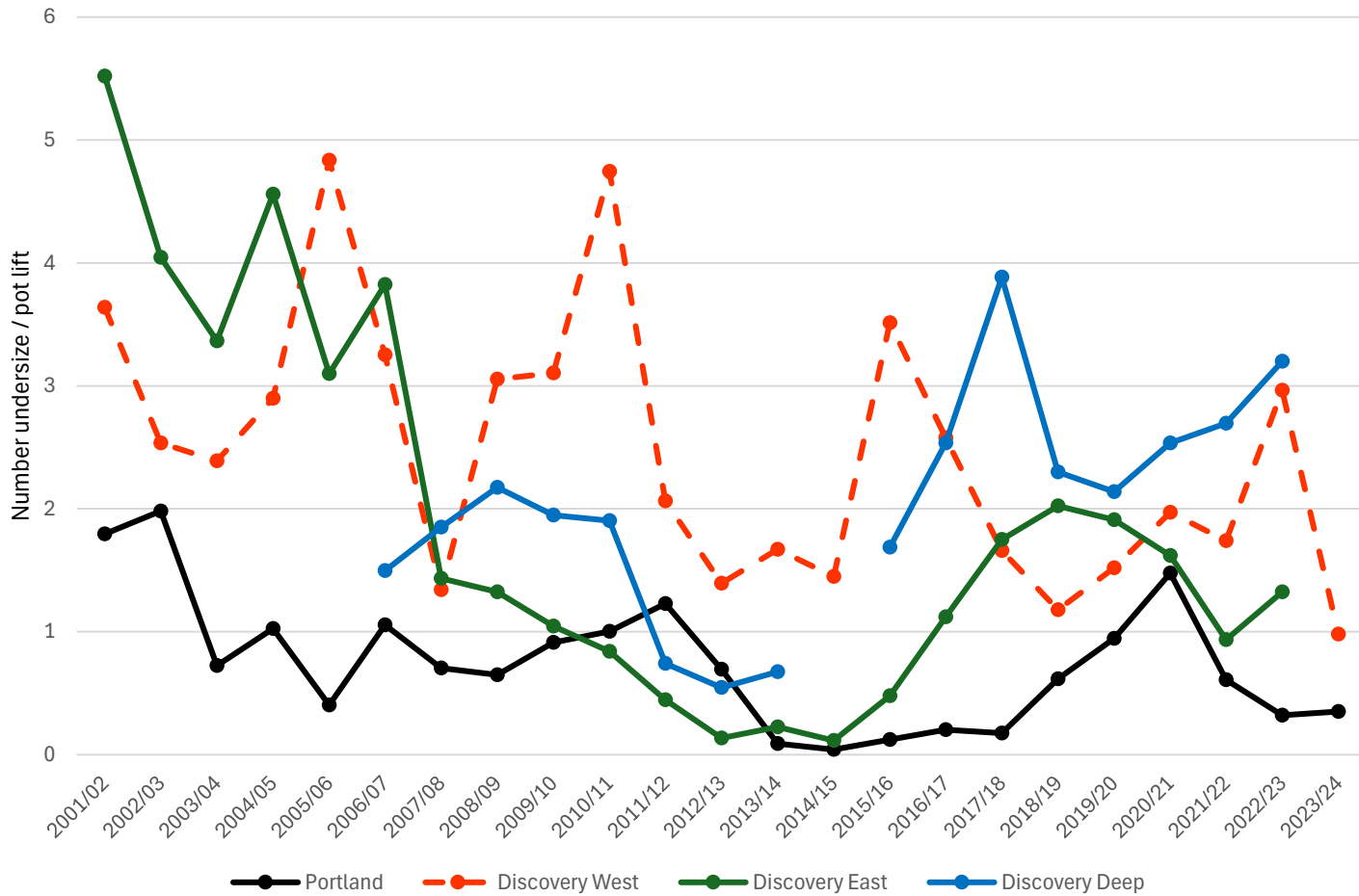


Fixed Site Surveys - WZ



Fixed Site Surveys - WZ

Portland Region



Rock Lobster Ruler Trial - Update



RL ruler trial



- EOI emailed to 420 recreational fishers who reported lobster catch in 2023/24 season.
- More than 200 respondents.
- Feedback has been positive so far.
- Comment – “We always measure our catch to ensure it is size but often guesstimate the actual size for lodging”.
- Questionnaire March 2025

Lobster Length to weight

<https://vfa.vic.gov.au/science-in-fisheries/age-and-weight-estimator-for-fish>

ROCK LOBSTER

FEMALE

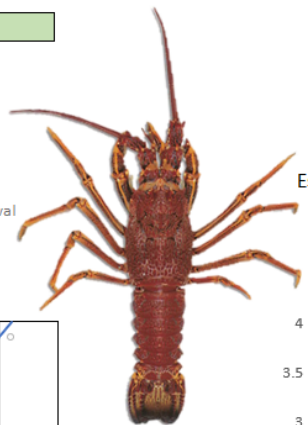
Carapace length = **10.5** cm

MALE

Carapace length = **15** cm

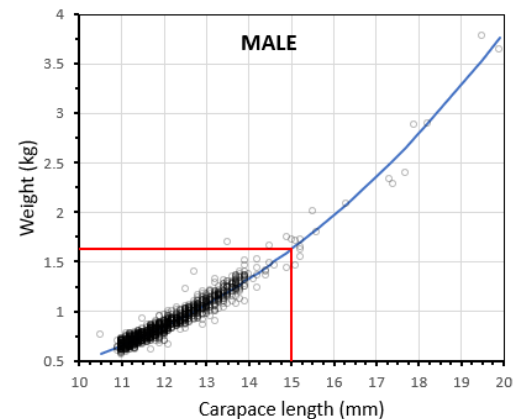
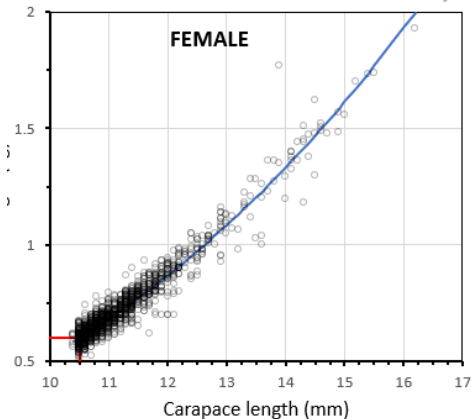
Estimated weight = **0.60** kg
0.58 - 0.62 kg confidence interval

Estimated weight = **1.63** kg
1.6 - 1.66 kg confidence interval



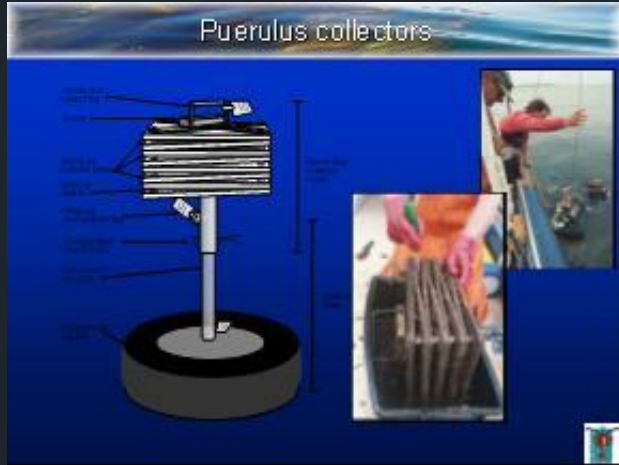
Minimum legal size - Female **10.5** cm

Minimum legal size - Male **11** cm



see the *Victorian Recreational Fishing Guide* for further information on rules and regulations
<https://vfa.vic.gov.au/recreational-fishing/recreational-fishing-guide>

Puerulus Monitoring

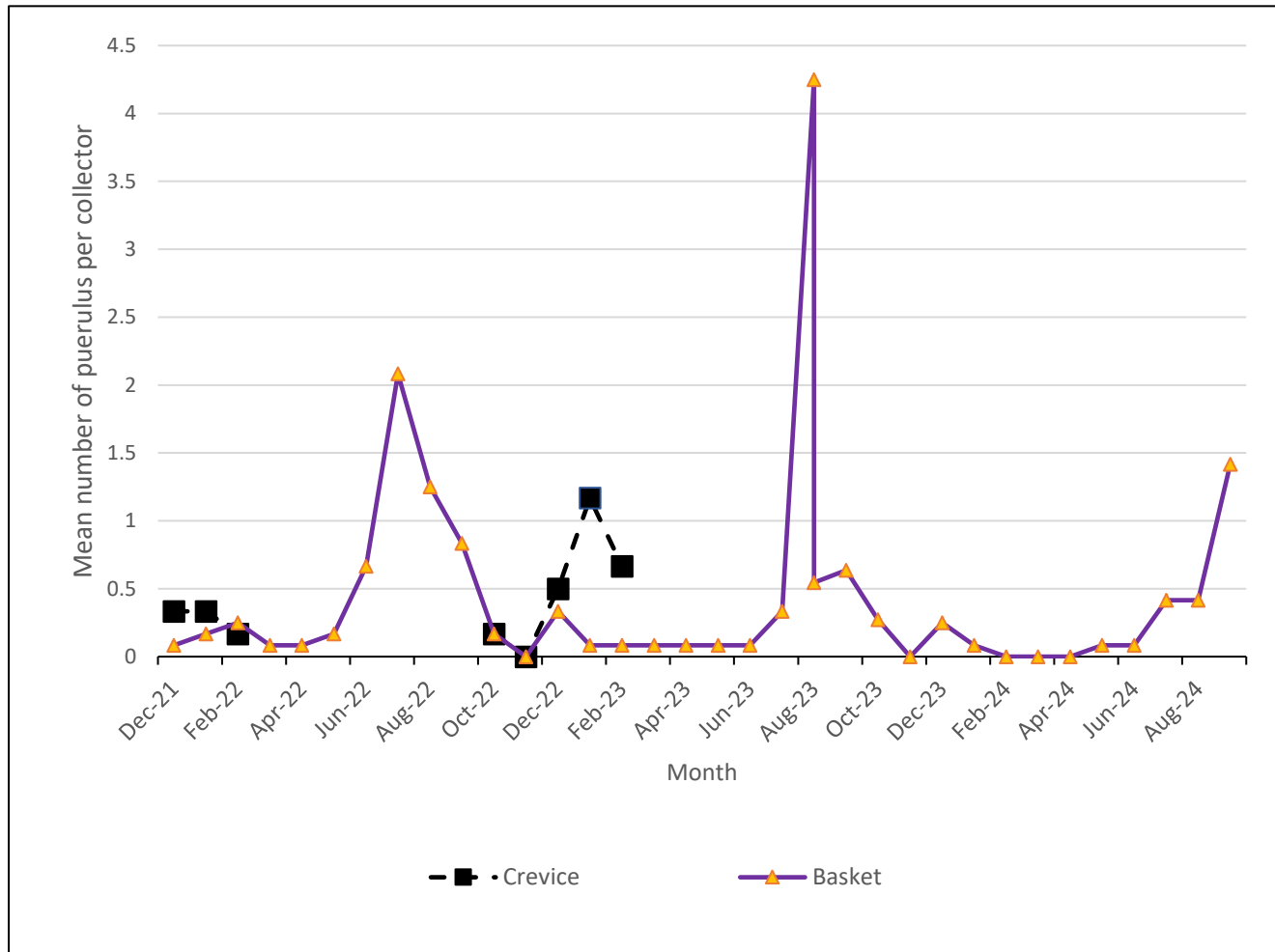


Puerulus Monitoring – Apollo Bay

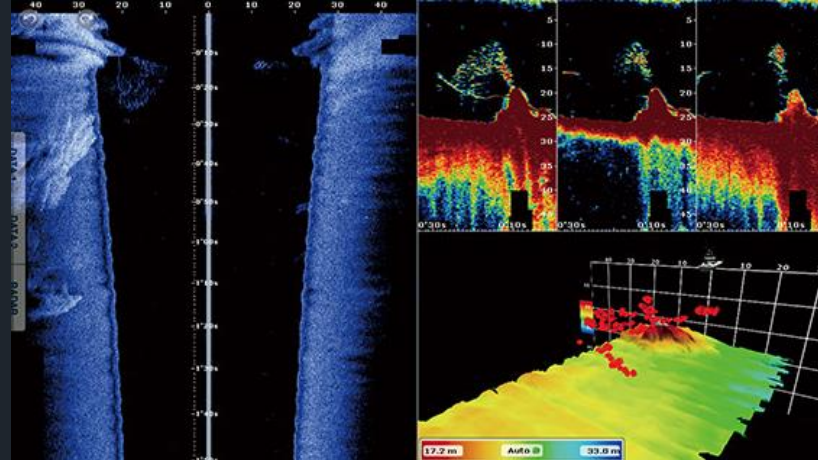
- Basket collectors
 - Initiated Dec 2021
 - Continue to be serviced monthly by Otway Ocean Care.



Puerulus Settlement



Item 8. Vessel Efficiency Discussion



Historic data

- Vessel description survey conducted during 1993/94 season.
- 75% of fishers responded
- Data collected
 - Hull design/construction
 - Length/beam/draft
 - Pot entitlement
 - Pot hauler/tipper
 - Pot design/materials
 - Engine kW
 - Holding facility
 - Radar
 - Satellite navigation
 - Autopilot
 - GPS
 - Plotter
 - Paper sounder
 - Colour sounder
 - Sonar
 - Communications
- The Victorian stock assessment was found to be sensitive to increases in effort of between 1.5% - 3%
- At the time, WA adopted a weighting of 3% per annum over reported effort, due to increases in fishing power.

Research Priority?

Discussion

- Is this a research priority?
- What data needs to be collected?
- How will this data be used to estimate improvements in fishing power?