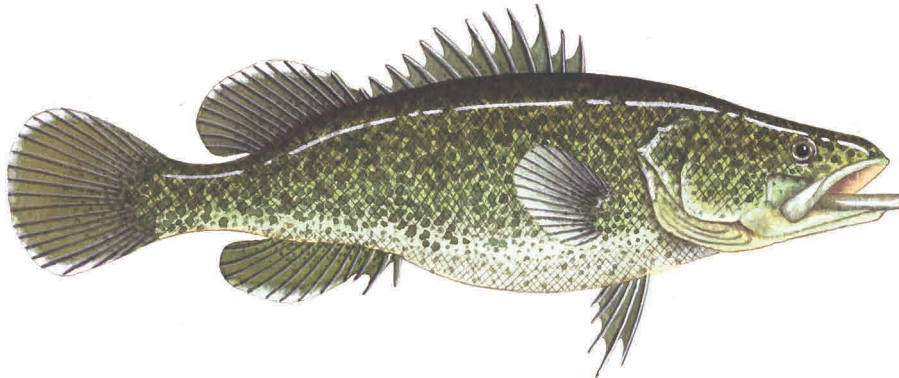


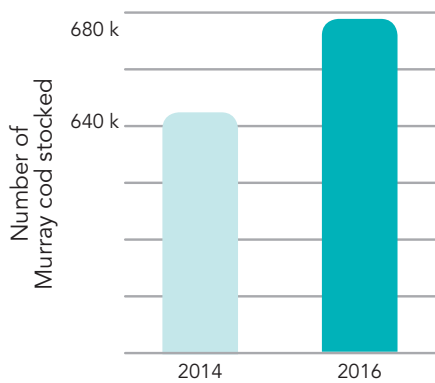
# Stocking Murray cod



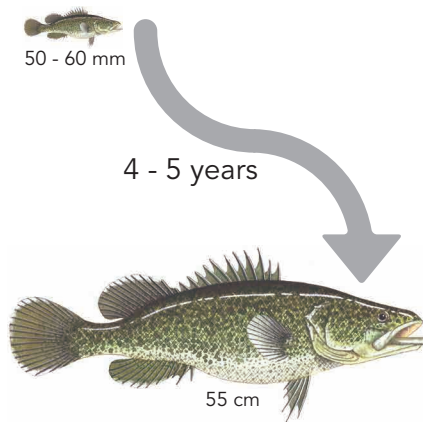
## Where

1. Goulburn River (lower)
2. Kiewa River (lower)
3. Lake Eildon
4. Lake Hume
5. Broken Creek
6. Loddon River
7. Campaspe River

## How many



## How big



## When to catch



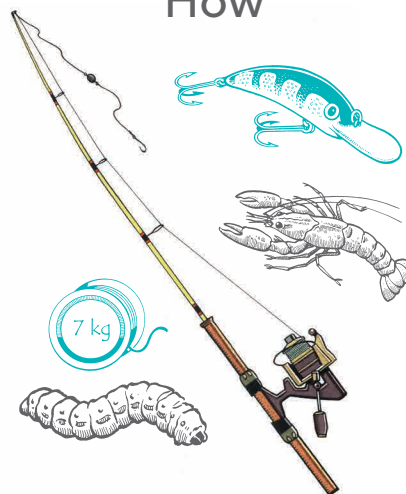
Summer, Spring, Autumn, especially in the mornings and evenings



## Habitat

Occurs most frequently in sluggish, turbid waters, usually in deep holes, where logs and stumps afford cover and provide spawning sites.

## How



More  for you to catch!